



FOREWORD

In September 2015, 193 World Leaders signed on to the Sustainable Development Goals (SDGs). Since then, countries across the world have embraced the ambitions of the Goals and begun to include them in their learning institutions.



HIS EXCELLENCY
BABAJIDE OLUSOLA SANWO-OLU
GOVERNOR OF LAGOS STATE

Along with these great nations of the world, Lagos State has also adopted the Sustainable Development Goals (SDGs) framework of 17 inter-connected goals and aligned it with our THEMES medium-term development agenda as well as our long-term Lagos State

The Goals are clear, purposeful, measurable and can be acted upon at any level on the large scale of a country or state.. but single individual.

I am therefore delighted that we can no being the power of this framework to our learning institutions as we sprint through this Decade of Action. The SDGs will enable our students think robustly about how to solve problems in their own locality and beyond, tackling issues that affect us all including extreme poverty, good health, quality education, gender equality, environmental sanitation, energy access, unemployment, inequality climate change, circularity, peace and more.

By learning and acting together, students can experience strength in unity as they create solutions that will lead to a sustainable future for everyone.

I already draw inspiration from the incredible innovation, creativity, leadership and passion that our yong people exhibit every day and I am optimistic that every young person that is introduced to the SDGs through this useful book will make a difference in their local community and we are excited to be a part of this empowering experience.

I hereby call on the private sector. development partners and all other stakeholders to seek out opportunities to productive partnership with these young citizens on the SDGs. Your belief in and support for the vision and ability of or young ones is of utmost importance and essential for us all to deliver on this ambition.

The road ahead is a long one and not without challenges, but with the right people, the right support and the right actions, we will build on today's promise of becoming tomorrow's model mega city and go from goals to a sustainable future.



Dr. Oreoluwa Finnih
Special Adviser to the Lagos State Governor
On Sustainable Development Goals

PREFACE

The Sustainable Development Goals are powerful lenses through which the world looks at the most pressing global issues, share understanding, take action and communicate progress. They are the perfect tool for change-makers. Enabling us to speak one common language, within our communities and also with the rest of the world.

More than 40% of the population of Lagos falls between the ages of 10 and 24 years; one the largest youth populations in the world. Our youths are incredibly well informed, civic-minded and innovative - indeed, they are our best chance and we cannot afford to leave them behind if we are to meet our aspirations of peace and prosperity for people and planet by 2030.

This book, titled "Transforming Our World: the 2030 Agenda for Sustainable Development aims to engage, enlighten and equip students in our secondary schools with the knowledge, skills, tools and pathways to be effective change agents in their immediate community and beyond.

In addition to providing educational insight on advancing the attainment of the SDGs,

this student-friendly book contains useful hints on how each of the developmental goals impacts our lives and also proactively encourages and supports taking action, as individuals as well as on the community level.

With the right tools and information, students and young people can play a critical role in the implementation and monitoring of the SDGs as well as spark change in the communities.

We thank Mr. Governor, Babajide Olusola Sanwoolu, for his vision and leadership. We also appreciate the Office of the Senior Special Assistant to the President on the SDGs (OSSAP-SDGs), the United Nations Information Center, the Lagos State Ministry of Education and all other partners for their support.

Our youths have shown themselves to be capable of amazing things and are opening up new frontiers every day. We see their passion, energy, creativity and leadership potential - and we want to nurture and support them as they drive positive impact.

We know that when our youths are unleashed, they will change not just our dear State, but the entire world. With the right tools and information, students and young people can play a critical role in the implementation of monitoring of the SDGs and sparking action in their communities towards achieving a better and desirable future that we all crave for.



Transforming our World: The 2030 Agenda for Sustainable Development





"This is an Agenda of unprecedented scope and significance. It is accepted by all countries and is applicable to all, taking into account different national realities, capacities and levels of development and respecting national policies and priorities.

On the 25 September, 2015, the United Nations General Assembly unanimously adopted the Resolution 70/1, transforming our World: the 2030 Agenda for Sustainable Development. This historic document lays out the 17 Sustainable Development Goals, which aim to mobilize global efforts to end poverty, foster peace, safeguard the rights and dignity of all people, and protect the planet.

The resolution begins with a declaration that states:

"On behalf of the people we serve, we have adopted a historic decision on a comprehensive, far-reaching and people-centered set of universal and transformative Goals and targets. We commit ourselves to working tirelessly for the full implementation of this Agenda by 2030. We recognize that eradicating poverty in all its forms and dimensions, including extreme poverty, is the greatest global challenge and an indispensable requirement for sustainable development. We are committed to achieving sustainable development in its three dimensions – economic, social and environmental – in a balanced and integrated

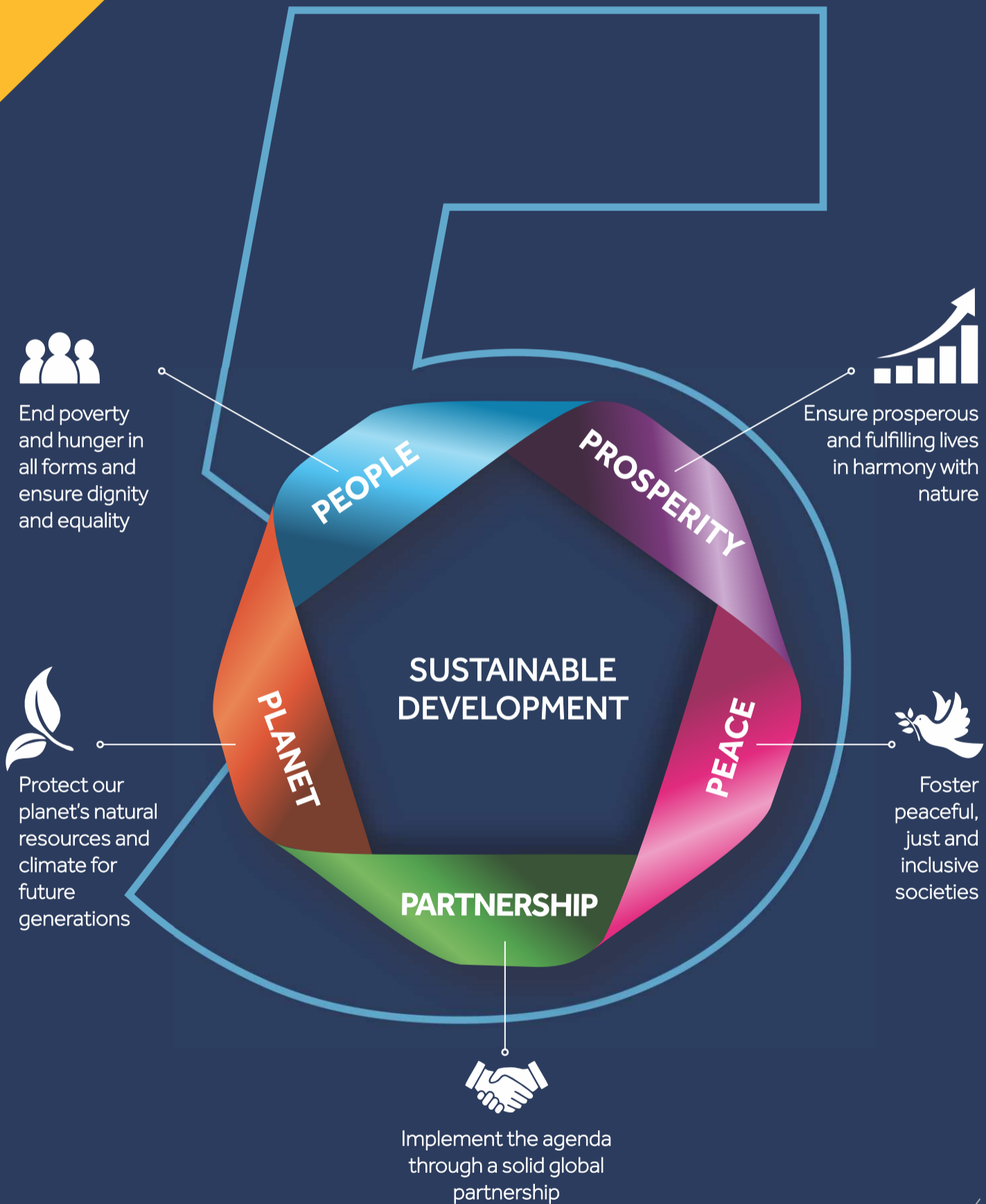
manner. We will also build upon the achievements of the Millennium Development Goals and seek to address their unfinished business.

"We resolve, between now and 2030, to end poverty and hunger everywhere; to combat inequalities within and among countries; to build peaceful, just and inclusive societies; to protect human rights and promote gender equality and the empowerment of women and girls; and to ensure the lasting protection of the planet and its natural resources. We resolve also to create conditions for sustainable, inclusive and sustained economic growth, shared prosperity and decent work for all, taking into account different levels of national development and capacities.

"As we embark on this great collective journey, we pledge that no one will be left behind. Recognizing that the dignity of the human person is fundamental, we wish to see the Goals and targets met for all nations and peoples and for all segments of society. And we will endeavour to reach the furthest behind first.

These are universal goals and targets which involve the entire world, developed and developing countries alike. They are integrated and indivisible and balance the three dimensions of sustainable development.

"The Goals and targets are the result of over two years of intensive public consultation and engagement with civil society and other stakeholders around the world, which paid particular attention to the voices of the poorest and most vulnerable. This consultation included valuable work done by the Open Working Group of the General Assembly on Sustainable Development Goals and by the United Nations, whose Secretary-General provided a synthesis report in December 2014."





SDGs Nuggets

1

SDGs are bold universal agreements to end poverty in all its dimensions and craft an equal, just and secure world.

2

SDGs has 17 goals and 169 targets and it covers multiple aspects of growth and development.

3

It was adopted by 193 countries of United Nations general assembly on 25th September 2015.

4

SDG is officially known as "transforming our world: the 2030 agenda for sustainable development."

5

They are built on the principle agreed upon under resolution, "the future we want".

6

All the goals are interconnected i.e., Success in one influences success in others. For instance, fostering peace and inclusive societies will reduce inequalities and help the economies to prosper

7

Moreso, SDGs cover issues that affect everyone. The agenda reaffirm international commitment to end poverty permanently everywhere. The project invite everyone to build a more sustainable, safer and prosperous planet for all humanity. Infact, they are ambitious in making sure that no one is left behind.



THE 3 FUNDAMENTAL OF SDGS

THERE ARE
[17]
GOALS

The SDGs are made of 17 Goals
A Goal is an aspiration- A commitment made to address a challenge

[169]
TARGETS

Each goal is broken into a number of targets.
A target is an action- a specific, measurable and time bound outcome which contributes directly to reaching a goal

[234]
INDICATORS

Each target is measured through one or more indicators. An indicator helps with accountability- it is a metric used to measure progress through data collection and analysis

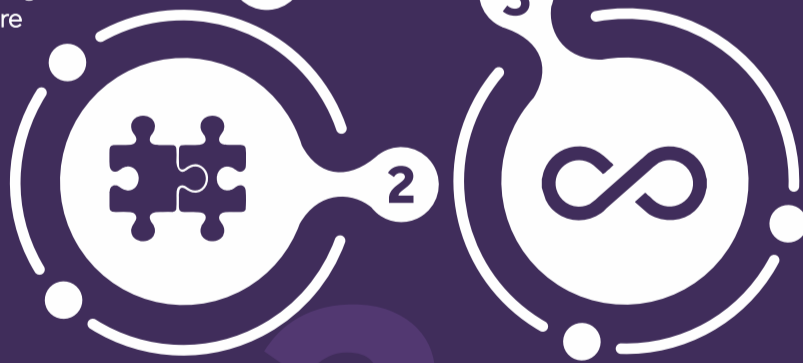
UNIVERSAL

Eradicating extreme poverty and building a sustainable future are challenges all countries face. Unlike the Millennium Development Goals (MDGs), which only applied to the developing countries, the SDGs are universal.



INCLUSIVE

The SDGs pledge to leave no one behind, meaning that no Goals will be met unless it is met for every-one. This means putting the needs and interest of the furthest behind first.



INTEGRATED

The SDGs cover all the three dimensions of sustainable development (economic, social and environmental) with an underlying consideration for people, planet, peace, prosperity and partnership



THE GOALS CATEGORIES



**HAPPY,
HEALTHY &
PROSPEROUS
LIFE**

- 1 No Poverty
- 2 Zero Hunger
- 3 Good Health and Wellbeing
- 4 Quality Education



**HEALTHY
PLANET AND
ENVIRONMENTAL
SUSTAINABILITY**

- 6 Clean Water and Sanitation
- 7 Affordable and Clean Energy
- 13 Climate Action
- 14 Life Below Water
- 15 Life on Land



**PEACEFUL,
JUST AND
INCLUSIVE
SOCIETIES**

- 5 Gender Equality
- 10 Reduced Inequality
- 16 Peace, Just and Strong Institutions
- 17 Partnership for the Goals



**ECONOMIC
PROSPERITY**

- 8 Decent Work and Economic Growth
- 9 Industry, Innovation and Infrastructure
- 11 Sustainable Cities and Communities
- 12 Responsible Consumption and Production



INTRODUCTION



Kaphayah Olayemi Sarumi (Mrs.)
Permanent Secretary, OSDGs



The art of mainstreaming the UN Charter (SDGs) in learning institutions has become more imperative following lateral possibilities accruing from the setting of agenda for sustainable education. Beyond incorporating the SDGs into her governance structure through boundless effort and institutional efficacy, the Lagos State Government as the repository of developmental initiatives designed an effective and participatory method of cascading SDGs into our secondary school curriculum as part of the mantra 'leaving no one behind'.

This publication therefore, provides a clear and a stable model for students to engage the world with positive minds. Bringing into fore, the ineluctable role of education in providing future leaders adequate knowledge and the tools necessary to create positive change in the society.

Illustrative and educative, this literature captures the concept of SDGs in a simple and appealing way by exposing students to living in the most possible humane manner - learning how to protect the environment, manage resources, recognise human dignity and transition to more just and sustainable systems.

Significantly, the book provides an academic lens into the dimension of SDGs to influence a outlook to realization of the 5 Ps – People, Planet, Prosperity, Peace and Partnership with impressionable impact towards a more sustainable and equitable future.

In preparing students to take on a more direct influence in the creation of better solutions to pressing local challenges, this publication takes a student-centric approach in tailoring each goal specifically to align their minds in interpreting the targets of 17 goals and pursuing endeavours that support new sustainable development solutions.

Each page produces an in-depth explanation on each of the goals with a workbook on how students can support the goals and with opportunity to also suggest what government can do to achieve some of the goals from their own perspective.

Within the compass of this piece, students would learn the purpose of setting out such supremely ambitious and transformational vision by the United Nations. And the shared principles and commitment of countries to foster the ethic of global citizenship and shared responsibility.

As a government, we have mapped the road to sustainable development having realised that the future of humanity and of our planet lies in the hands of today's younger generation who will pass the torch to future generations.



1 NO POVERTY



NO POVERTY

- More than 700 million people, or 10% of the world population, still live in extreme poverty.
- The poverty rate in rural areas is 17.2 per cent—more than three times higher than in urban areas.
- 55 per cent of the world's population have no access to social protection.
- One out of five children live in extreme poverty.
- The majority of people living on less than \$1.90 a day live in sub-Saharan Africa.
- Majority of people are still struggling to fulfil the most basic needs like health, education, and access to water and sanitation.
- Ensuring social protection for all children and other vulnerable groups is critical to reduce poverty.

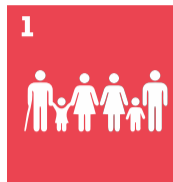




- 1.1** By 2030, **eradicate extreme poverty** for all people everywhere, currently measured as people living on less than \$1.25 a day.
- 1.2** By 2030, reduce at least by **half the proportion** of men, women and children of all ages **living in poverty** in all its dimensions according to national definitions.
- 1.3** Implement nationally **appropriate social protection systems and measures** for all, including floors, and by 2030 achieve substantial coverage of the poor and the vulnerable.
- 1.4** By 2030, ensure that all men and women, in particular the poor and the vulnerable, have **equal rights to economic resources, as well as access to basic services, ownership and control over land and other forms of property, inheritance, natural resources, appropriate new technology and financial services, including micro-finance.**

- 1.5** By 2030, **build the resilience of the poor** and those in vulnerable situations and **reduce their exposure and vulnerability to climate-related extreme events** and other economic, social and environmental shocks and disasters.
- 1a** **Ensure significant mobilization of resources** from a variety of sources, including through enhanced development cooperation, in order to provide adequate and predictable means for developing countries, in particular least developed countries, to **implement programmes and policies to end poverty in all its dimensions.**
- 1b** Create sound policy frameworks at the national, regional and international levels, based on **pro-poor and gender-sensitive development strategies, to support accelerated investment in poverty eradication actions**





END POVERTY IN ALL ITS FORMS EVERYWHERE

Poverty is more than just a lack of income and resources to ensure a sustainable livelihood. It results in hunger and malnutrition, limited access to education and other basic services, discrimination and social exclusion as well as a lack of participation in decision-making. Economic growth needs to be shared to create sustainable jobs and promote equality.

1 - THE WORLD BANK INTERNATIONAL THRESHOLD FOR EXTREME POVERTY IS:

- A 1.25 dollars a day
- B 1.90 dollars a day
- C 5 dollars a day

2 - 4 IN 10 PEOPLE WERE LIVING IN EXTREME POVERTY IN 1990. HOW MANY PEOPLE NOW LIVE BELOW THIS THRESHOLD?

- A 1 in 10
- B 3 in 10
- C 5 in 10

3 - MOST PEOPLE LIVING IN EXTREME POVERTY LIVE IN:

- A Latin America
- B South Asia
- C Sub-Saharan Africa
- D Eastern Europe

4 - HOW MANY PEOPLE IN THE WORLD ARE HOMELESS OR LIVE IN INADEQUATE HOUSING?

- A 1 in 7 000
- B 1 in 70
- C 1 in 7

5 - HOW MANY PEOPLE ARE LIVING IN POVERTY OR SOCIAL EXCLUSION IN THE EUROPEAN UNION?

- A 10 million (or 1.9% of the European population)
- B 50 million (or 9.8% of the European population)
- C 119 million (or 23.7% of the European population)

6 - WHO OR WHAT IS THE LARGEST GLOBAL EMPLOYER?

- A The textile industry
- B Family agriculture
- C The mobile phone industry

7 - DURING A NATURAL DISASTER, WHOSE WELL-BEING SUFFERS THE MOST?

- A The rich
- B The poor
- C The middle-class

8 - 82% OF THE WEALTH CREATED WORLDWIDE IN 2017 BENEFITED THE RICHEST 1%. WHAT ABOUT THE POOREST 50%?

- A They got nothing
- B They shared 5% of the wealth created
- C They shared 10% of the wealth created

9 - BETWEEN 1975 AND 2004, OF 1,556 NEW MEDICATIONS CREATED, HOW MANY WERE INTENDED TO TREAT ILLNESSES ONLY FOUND IN DEVELOPING COUNTRIES?

- A 21
- B 156
- C 345

10 - HOW CAN ACCESS TO INFORMATION HELP PEOPLE ESCAPE POVERTY?

- A It encourages economic growth and development
- B It enables us to obtain accessible and user-friendly content
- C It facilitates exchanges and communication
- D All the above



2 ZERO HUNGER



ZERO HUNGER

- There are more than 800 million people who suffer from hunger worldwide, the vast majority in developing countries.
- Hunger and malnutrition creates less productive individuals, who are more prone to disease and often unable to earn more and improve their livelihoods.
- Extreme hunger and malnutrition remains a barrier to sustainable development and creates a trap from which people cannot easily escape

 NO
child
Hungry





2 The Targets

- 2.1 **By 2030, end hunger and ensure access by all people**, in particular the poor and people in vulnerable situations, including infants, to safe, nutritious **and sufficient food all year round**.
- 2.2 By 2030, **end all forms of malnutrition**, including achieving, by 2025, the internationally agreed targets on stunting and wasting in children under 5 years of age, and address the nutritional needs of adolescent girls, pregnant and lactating women and older persons
- 2.3 **By 2030, double the agricultural productivity and incomes of small-scale food producers**, in particular women, indigenous peoples, family farmers, pastoralists and fishers, including through secure and equal access to land, other productive resources and inputs, knowledge, financial services, markets and opportunities for value addition and non-farm employment
- 2.4 By 2030, ensure sustainable food production systems **and implement resilient agricultural practices that increase productivity and production**, that help maintain ecosystems, that **strengthen capacity for adaptation to climate change**, extreme weather, drought, flooding and other disasters and that progressively improve land and soil quality
- 2.5 By 2020, **maintain the genetic diversity of seeds**, cultivated plants and farmed and domesticated animals and their related wild species, including through soundly managed and diversified seed and plant banks at the national, regional and international levels, and **promote access to and fair and equitable sharing of benefits arising from the utilization of genetic resources** and associated traditional knowledge, as internationally agreed
- 2a **Increase investment**, including through enhanced international cooperation, in rural infrastructure, agricultural research and extension services, technology development and plant and livestock gene banks **in order to enhance agricultural productive capacity in developing countries, in particular least developed countries**.
- 2b **Correct and prevent trade restrictions and distortions in world agricultural markets**, including through the parallel elimination of all forms of agricultural export subsidies and all export measures with equivalent effect, in accordance with the mandate of the Doha Development Round
- 2c Adopt measures to **ensure the proper functioning of food commodity markets** and their derivatives and facilitate timely access to market information, including on food reserves, in order to help limit extreme food price volatility.





ZERO HUNGER

We need to rethink how we grow, share and consume our food. It is possible for agriculture, forestry and fisheries to provide nutritional food for all and generate decent incomes, while supporting rural development and protecting the environment. Currently, however, our soil, freshwater, oceans, forests and biodiversity are being rapidly degraded. Climate change is placing increasing pressure on the resources we depend on and exacerbating the risk of natural disasters such as drought or flooding.

1 - HOW MANY OF THE WORLD'S PEOPLE ARE HUNGRY?

- A 1 in 3
- B 1 in 10
- C 1 in 20

2 - TRUE OR FALSE? THE NUMBER OF HUNGRY PEOPLE IN THE WORLD HAS FALLEN SINCE 1990:

- A True
- B False

3 - OF THE 815 MILLION PEOPLE AFFECTED BY HUNGER, HALF ARE:

- A Women
- B Peasant farmers
- C People on a diet

4 - DO WE PRODUCE ENOUGH FOOD TO FEED THE WHOLE WORLD?

- A No, we need to produce more
- B Yes, but it is unequally distributed and not everyone has access
- C That depends on the year

5 - TO FEED THE WORLD IN 2050, FOOD PRODUCTION WILL NEED TO INCREASE BY:

- A 20%
- B 40%
- C 70%

6 - HAS THE PRICE OF FOOD INCREASED SINCE THE 2000s?

- A No, it has fallen
- B Yes, it has nearly doubled
- C It is unchanged

7 - HOW MUCH FOOD IS WASTED IN THE WORLD (PER SECOND)?

- A 41 kg
- B 410 kg
- C 41 tonnes

8 - WHAT IS FOOD INSECURITY?

- A When you suffer or are at risk of suffering from hunger
- B When you do not eat your five fruit and vegetables a day
- C When you risk your life to find food

9 - WHEN IS THE MOST CRITICAL AND DANGEROUS PERIOD FOR CHILD MALNUTRITION?

- A Between -9 months (conception) and 24 months
- B Between 2 and 4 years
- C Between 4 and 8 years

10 - FAMILY AGRICULTURE EMPLOYS:

- A 15% of the world's active population
- B 42% of the world's active population
- C 70% of the world's active population



3 GOOD HEALTH AND WELL-BEING



GOOD HEALTH AND WELL-BEING

- Ensuring healthy lives and **promoting wellbeing for all at all ages** is important to building prosperous societies.
- In the past ten years, major progress has been made in **improving the health of millions of people particularly** in area of **maternal and child mortality**
- Life expectancy continues to increase globally, and the **fight against some infectious diseases has made steady progress.**
- In the case of other diseases such as malaria and tuberculosis, **progress has slowed or stalled.**
- At least **half the world's population** are still **without access to essential health services.**
- Concerted efforts are required to achieve universal health coverage and sustainable financing for health; **address the growing burden of non-communicable diseases, tackle antimicrobial resistance and environmental factors contributing to ill health.**





SDG 3 The Targets

- 3.1 By 2030, **reduce the global maternal mortality ratio to less than 70 per 100,000 live births**
- 3.2 By 2030, **end preventable deaths of newborns and children under 5 years of age**, with all countries aiming to **reduce neonatal mortality to at least as low as 12 per 1,000 live births** and **under-5 mortality to at least as low as 25 per 1,000 live births**
- 3.3 By 2030, **end the epidemics of AIDS, tuberculosis, malaria and neglected tropical diseases and combat hepatitis, water-borne diseases and other communicable diseases**
- 3.4 By 2030, reduce by one third premature mortality from non-communicable diseases through prevention and treatment and **promote mental health and well-being**
- 3.5 **Strengthen the prevention and treatment of substance abuse**, including narcotic drug abuse and harmful use of alcohol
- 3.6 By 2020, **halve the number of global deaths and injuries from road traffic accidents** 3.7
- 3.7 By 2030, ensure universal access to sexual and reproductive health-care services, including for family planning, information and education, and the **integration of reproductive health into national strategies and programmes**
- 3.8 **Achieve universal health coverage**, including financial risk protection, **access to quality essential health-care services** and access to safe, effective, quality and affordable essential medicines and vaccines for all
- 3.9 By 2030, substantially **reduce the number of deaths and illnesses from hazardous chemicals and air, water and soil pollution and contamination**
- 3a Strengthen the implementation of the World Health Organization Framework Convention on **Tobacco Control in all countries, as appropriate**
- 3b **Support the research and development of vaccines and medicines** for the communicable and non-communicable diseases that primarily affect developing countries, **provide access to affordable essential medicines and vaccines**, in accordance with the Doha Declaration on the TRIPS Agreement and Public Health, which affirms the right of developing countries to use to the full the provisions in the Agreement on Trade Related Aspects of Intellectual Property Rights regarding flexibilities to protect public health, and, in particular, **provide access to medicines for all**
- 3c substantially increase health financing and the recruitment, development, **training and retention of the health workforce** in developing countries, especially in least developed countries and Small Island developing States
- 3d Strengthen the capacity of all countries, in particular developing countries, for **early warning, risk reduction and management of national and global health risks**





GOOD HEALTH AND WELL-BEING

Ensuring healthy lives and promoting well-being for all at all ages is essential to sustainable development. Significant progress has been achieved in improving life expectancy and reducing certain major causes of mother-and-child mortality. Notable progress has been made in improving access to clean drinking water and sanitation, reducing malaria, TB, polio and HIV/AIDS, but far more needs to be done to eradicate a whole range of diseases and deal with numerous different persistent or new health issues.

1 - WHAT IS AVERAGE LIFE EXPECTANCY IN THE WORLD?

- A 51 years
- B 61 years
- C 71 years

2 - WHY IS IT IMPORTANT TO PARTICIPATE IN SPORT EVERY DAY?

- A It reduces the risk of chronic and cardiovascular diseases
- B It helps everyone to be in good physical shape
- C It improves sleep and reduces stress and anxiety
- D All the above

3 - HOW MUCH PHYSICAL ACTIVITY DOES A CHILD AGED 5 TO 17 NEED EACH DAY?

- A 30 minutes
- B 1 hour
- C 2 hours

4 - WHAT CONTINENT SUFFERS FROM 90% OF MALARIA CASES?

- A Asia
- B Africa
- C Latin America

5 - WHAT IS THE MAIN CAUSE OF MORTALITY IN THE WORLD?

- A An unhealthy environment
- B Shark attacks
- C Road traffic accidents

6 - WHAT IS THE MAIN CAUSE OF CHILD MORTALITY IN DEVELOPING COUNTRIES?

- A War
- B Malnutrition
- C Infectious diseases

7 - OVERALL, IS CLIMATE CHANGE LIKELY TO HAVE A NEGATIVE OR POSITIVE IMPACT ON HEALTH?

- A Positive: climate change will enable cold areas to become more liveable, and wet areas to become drier.
- B Negative: in most countries, climate change will negatively influence air and water quality, the amount of food and safety of housing.

8 - WHO ARE MOST EXPOSED TO HEALTH RISKS DUE TO CLIMATE CHANGE? THOSE WHO LIVE:

- A In small developing island states
- B In coastal regions
- C In megacities
- D In mountainous regions
- E In polar areas
- F All the above

9 - TRUE OR FALSE? OBESITY NOW KILLS THREE TIMES MORE PEOPLE THAN MALNUTRITION.

- A True
- B False

10 - JAPAN AND SIERRA LEONE ARE TWO EXTREMES OF WHICH WELL-BEING INDICATOR?

- A Unemployment rate: 3.1% in Japan and 60% in Sierra Leone
- B Literacy rate: 99% in Japan and 42% in Sierra Leone
- C Life expectancy: 84 years in Japan and 50 years in Sierra Leone, a 34-year difference.



4 QUALITY EDUCATION



QUALITY EDUCATION

- 262 million children and adolescents remain out of school globally
- Education enables upward socioeconomic mobility and is a key to escaping poverty.
- Education is essential to achieving many other Sustainable Development Goals (SDGs).
- When people are able to get quality education they can break from the cycle of poverty.
- Education helps to reduce inequalities and to reach gender equality
- One extra year of education is associated with a reduction of the Gini coefficient by 1.4 percentage points.
- Education empowers people everywhere to live healthier and sustainable lives.
- Education is also crucial to fostering tolerance between people and contributes to more peaceful societies.





4 The Targets

- 4.1 By 2030, ensure that **all girls and boys have access to quality early childhood development**, care and preprimary education so that they are ready for primary education
 - 4.3 By 2030, ensure equal access for all women and men to **affordable and quality technical, vocational and tertiary education**, including university
 - 4.4 By 2030, substantially **increase the number of youth and adults who have relevant skills, including technical and vocational skills**, for employment, decent jobs and entrepreneurship
 - 4.5 By 2030, **eliminate gender disparities in education** and ensure equal access to all levels of education and vocational training for the vulnerable, including persons with disabilities, indigenous peoples and children in vulnerable situations
 - 4.6 By 2030, ensure that all youth and a substantial proportion of adults, both men and women, **achieve literacy and numeracy**
 - 4.7 By 2030, **ensure that all learners acquire the knowledge and skills needed to promote sustainable development**, including, among others, through education for sustainable development and sustainable lifestyles, human rights, gender equality, **promotion of a culture of peace and non-violence**, global citizenship and appreciation of cultural diversity and of culture's contribution to sustainable development
- 4a **Build and upgrade education facilities** that are child, **disability and gender sensitive** and provide safe, nonviolent, inclusive and **effective learning environments for all.**
 - 4b By 2020, substantially **expand globally the number of scholarships available to developing countries**, in particular least developed countries, small island developing States and African countries for enrolment in higher education, including vocational training and information and communications technology, technical, engineering and scientific programmes, in developed countries and other developing countries.
 - 4c By 2030 substantially **increase the enrollment of qualified teachers**, including through international cooperation for teacher's training including developing countries, especially least developed countries and Small Island developing States.





ACCESS TO QUALITY EDUCATION

Goal 4 goes beyond primary education by highlighting the links between basic education and vocational training. It also focuses on equitable quality education by promoting lifelong learning opportunities for all. Education thus contributes to a safer, more sustainable and interdependent world.

1 - HOW MANY ADULTS ARE UNABLE TO READ AND WRITE AROUND THE WORLD?

- A 2 in 10
- B 3 in 10
- C 4 in 10

2 - SINCE 2000, THE NUMBER OF STUDENTS ENROLLED IN HIGHER EDUCATION AROUND THE WORLD:

- A Has fallen
- B Has doubled
- C Has remained unchanged

3 - WHERE DO HALF OF ALL CHILDREN NOT ENROLLED IN SCHOOL LIVE?

- A Eastern Europe
- B South Asia
- C North America
- D Sub-Saharan Africa

4 - HOW MANY CHILDREN IN DEVELOPING COUNTRIES GO TO SCHOOL ON AN EMPTY STOMACH?

- A 510,000 children (= population of Lyon)
- B 10 million children (= population of Île-de-France)
- C 66 million children (= population of France)

5 - SINCE 1990, SCHOOL REGISTRATION OF YOUNG CHILDREN (3 TO 6 YEARS) HAS INCREASED BY:

- A 10%
- B 20%
- C 30%

6 - TRUE OR FALSE? ONE OF THE MAIN OBJECTIVES OF SDG 4 IS GUARANTEED FREE EDUCATION FOR ALL.

- A True
- B False

7 - ON AVERAGE, WHAT SHARE OF THE WORLD'S EDUCATION BUDGET IS DEVOTED TO EARLY YEARS?

- A 2%
- B 10%
- C 20%

8 - NOTIONS OF EQUALITY AND JUSTICE FOR ALL SHOULD BEGIN IN:

- A Primary school
- B Lower secondary school
- C Upper secondary school
- D Higher education

9 - HOW MANY CHILDREN AND YOUNG PEOPLE IN THE WORLD SUFFER VIOLENCE OR HARASSMENT AT SCHOOL?

- A 1 in 100 children
- B 1 in 30 children
- C 1 in 15 children

10 - WHAT PROPORTION OF CHILDREN IN THE WORLD ARE FORCED TO WORK?

- A 1%
- B 5%
- C 11%



WORKSHEET / GOAL #4

1

Commitment

I personally commit to

.....

.....

.....

.....

.....

.....

.....

.....

.....

.....

.....

.....

.....

.....

.....

.....

.....

.....

.....

.....

.....

.....

2

Suggest 3 ways you can make a difference on this goal in your community

.....

.....

.....

.....

.....

.....

.....

.....

.....

.....

.....

.....

.....

.....

.....

.....

.....

.....

.....

.....

.....

.....

3

Your expectations from the government in relation to the Goal.

.....

.....

.....

.....

.....

.....

.....

.....

.....

.....

.....

.....

.....

.....

.....

.....

.....

.....

.....

.....

.....

.....

Scan the QR code to connect with our SDG Clubs





5 GENDER EQUALITY



GENDER EQUALITY

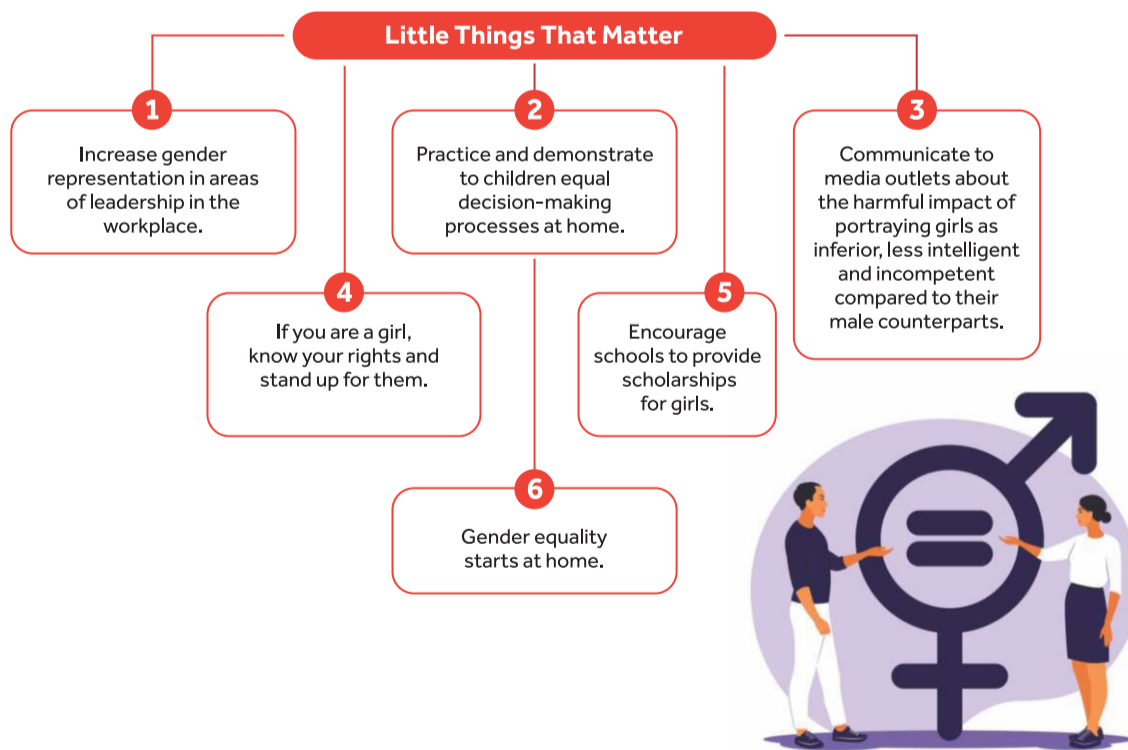
- Women and girls represent half of the world's population and therefore also half of its potential.
- Today gender inequality persists everywhere and stagnates social progress.
- Women continue to be underrepresented at all levels of political leadership.
- Across the globe, women and girls perform a disproportionate share of unpaid domestic work.
- Inequalities faced by girls can begin right at birth and follow them all their lives.
- In some countries, girls are deprived of access to health care or proper nutrition, leading to a higher mortality rate.





5 The Targets

- 5.1 **End all forms of discrimination against all women and girls everywhere**
 - 5.2 **Eliminate all forms of violence against all women and girls** in the public and private spheres, including trafficking and sexual and other types of exploitation
 - 5.3 Eliminate all harmful practices, such as child, early and **forced marriage and female genital mutilation**
 - 5.4 **Recognize and value unpaid care and domestic work through the provision of public services, infrastructure and social protection policies** and the promotion of shared responsibility within the household and the family as nationally appropriate
 - 5.5 Ensure women's full and effective participation and **equal opportunities for leadership at all levels of decision making** in political, economic and public life
 - 5.6 Ensure universal **access to sexual and reproductive health and reproductive rights** as agreed in accordance with the Programme of Action of the International Conference on Population and Development and the Beijing Platform for Action and the outcome documents of their review conferences
- 5a Undertake **reforms to give women equal rights to economic resources**, as well as access to ownership and control over land and other forms of property, financial services, inheritance and natural resources, in accordance with national laws
 - 5b Enhance the use of enabling technology, in particular information and communications technology, **to promote the empowerment of women**
 - 5c **Adopt and strengthen sound policies and enforceable legislation for the promotion of gender equality** and the empowerment of all women and girls at all levels.





GENDER EQUALITY

Gender inequality is one of the main obstacles to sustainable development, economic growth and poverty reduction. The issue of gender equality has gained significant visibility since 2000 and notable progress has been made in the school enrolment of girls and in integrating women into the labour market. Goal 5 is aimed at encouraging equal opportunities for men and women in economic development, eliminating all forms of gender violence, including early and/or forced marriage, and promoting possibilities for equal participation at all levels.

1 - WHAT PROPORTION OF PARLIAMENTARIANS AROUND THE WORLD ARE WOMEN?

- A 10%
- B 23%
- C 51%

2 - OF THE 815 MILLION PEOPLE IN THE WORLD UNABLE TO READ AND WRITE, HOW MANY ARE WOMEN?

- A One-third
- B One-half
- C Two-thirds

3 - ONLY TWO COUNTRIES IN THE WORLD HAVE MORE WOMEN THAN MEN IN PARLIAMENT. WHICH?

- A United Kingdom
- B Norway
- C France
- D Rwanda
- E Bolivia

4 - WHICH COUNTRY WAS THE FIRST IN THE WORLD TO GIVE WOMEN THE RIGHT TO VOTE AND STAND FOR ELECTION?

- A France
- B The United States
- C Finland

5 - HOW MANY COUNTRIES IN THE WORLD HAVE A FEMALE PRESIDENT OR PRIME MINISTER?

- A 5
- B 16
- C 31

6 - WHICH OF THESE STATEMENTS IS TRUE?

- A For equal work, men earn 20% more than women
- B Throughout the world, women work an average of four years more than men
- C It is naturally better for women to educate their children
- D Women genetically have less of a scientific mind

7 - WHAT PERCENTAGE OF RESEARCHERS ARE WOMEN?

- A 29%
- B 49%
- C 72%

8 - WHICH THREE COUNTRIES WERE NOTABLE FOR THEIR IMPROVED GENDER EQUALITY IN 2017?

- A Portugal, the United States and Germany
- B Rwanda, Nicaragua and Slovenia
- C Greece, Italy and Cyprus

9 - IF 75% OF MEN ARE ACTIVE (IN WORK OR ACTIVELY SEEKING IT) AROUND THE WORLD, WHAT IS THE EQUIVALENT PROPORTION OF ACTIVE WOMEN?

- A 25%
- B 48.5%
- C 75%

10 - ACCORDING TO THE WORLD ECONOMIC FORUM, GENDER INEQUALITIES AT WORK WILL NOT DISAPPEAR UNTIL:

- A 2030
- B 2100
- C 2234

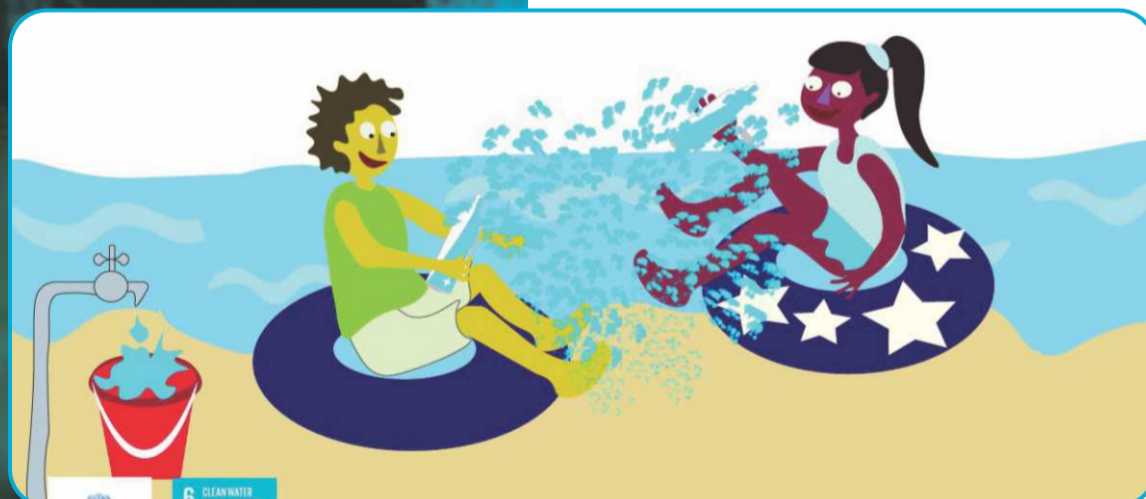


6 CLEAN WATER AND SANITATION



CLEAN WATER AND SANITATION

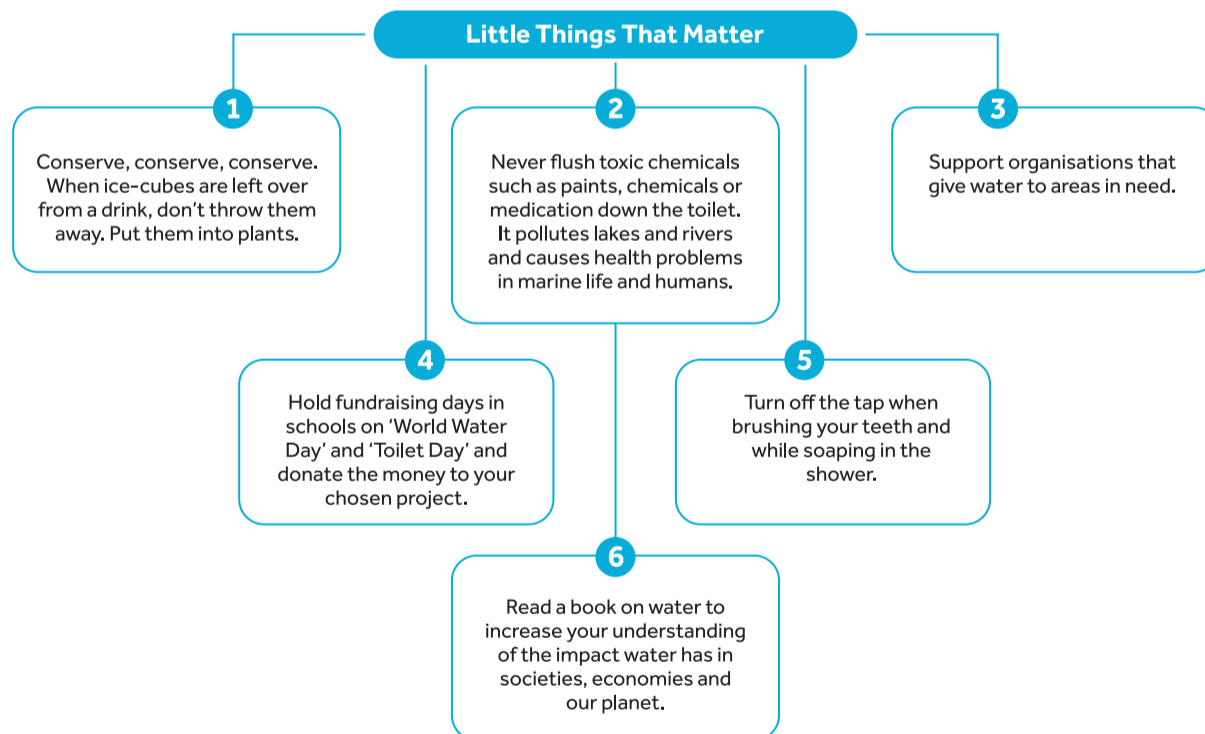
- The demand for water has outpaced population growth
- Half the world's population is already experiencing severe water scarcity at least one month a year.
- Access to water, sanitation and hygiene is a human right.
- Billions are still faced with daily challenges accessing even the most basic of services.
- 3 in 10 people lack access to safely managed drinking water services.
- About 3 billion people lack access to basic sanitation services, such as toilets or latrines.
- More than 80 per cent of wastewater resulting from human activities is discharged into rivers or sea without any treatment, leading to pollution.





6 The Targets

- 6.1 By 2030, achieve universal and equitable **access to safe and affordable drinking water for all**
- 6.2 By 2030, achieve **access to adequate and equitable sanitation and hygiene for all** and **end open defecation**, paying special attention to the needs of women and girls and those in vulnerable situations
- 6.3 By 2030, improve water quality by **reducing pollution**, eliminating dumping and minimizing release of hazardous chemicals and materials, **halving the proportion of untreated wastewater and substantially increasing recycling and safe reuse globally**
- 6.4 By 2030, substantially **increase water-use efficiency across all sectors** and ensure sustainable withdrawals and **supply of freshwater to address water scarcity** and substantially **reduce the number of people suffering from water scarcity**
- 6.5 By 2030, implement integrated water resources management at all levels, including **through transboundary cooperation as appropriate**
- 6.6 By 2020, **protect and restore water-related ecosystems**, including mountains, forests, wetlands, rivers, aquifers and lakes
- 6a By 2030, expand international cooperation and capacity-building support to developing countries in water- and sanitation-related activities and programmes, including water harvesting, desalination, water efficiency, wastewater treatment, **recycling and reuse technologies**
- 6b Support and strengthen the participation of local communities in **improving water and sanitation management**





CLEAN WATER AND SANITATION

Access to clean water and sanitation is a human right. Water as a resource is a decisive factor in all aspects of social, economic and environmental development. Goal 6 is aimed at ensuring access to clean water, sanitation and hygiene. It particularly includes targets relating to the protection and restoration of water-based ecosystems (mountains, forests, wetlands, rivers and lakes, etc.). It also focuses on improving water quality and reducing water pollution, particularly that caused by hazardous chemical products. Finally, it involves developing international cooperation to achieve integrated water management at all levels.

1 - WHICH OF THE FOLLOWING IS THE MOST DANGEROUS TO HUMANS?

- A Sharks
- B Mosquitoes
- C Dirty drinking water

2 - HOW MUCH WATER IS NECESSARY TO SURVIVE?

- A 2 to 5 litres a day
- B 8 to 15 litres a day
- C 40 to 60 litres a day

3 - HOW MUCH OF THE WORLD'S WATER IS FRESH?

- A Less than 3%
- B 50%
- C More than 95%

4 - TO SAVE WATER ON A DAILY BASIS, IT IS BEST TO:

- A Do the washing up by hand rather than use a dishwasher
- B Take short showers rather than baths
- C Drink fizzy drinks rather than water

5 - WHERE DOES 90% OF WASTEWATER FROM HUMAN ACTIVITY GO?

- A It is treated and recycled
- B It is held securely in watertight tanks
- C It is discharged back into the rivers and seas without being treated

6 - HOW MANY PEOPLE IN THE WORLD DO NOT HAVE ACCESS TO CLEAN AND SANITARY TOILETS?

- A 1 in 100
- B 1 in 10
- C 1 in 3

7 - WHAT IS HYDROELECTRIC POWER?

- A Electricity produced using the energy of rivers, streams and lakes
- B Electricity produced by waves
- C Electricity produced by rainwater run-off

8 - WHAT IS HYDRIC STRESS?

- A Insufficient resources to meet our water needs
- B Being unable to swim
- C Fear of water

9 - THE UN INTERNATIONAL DECADE ON CLEAN WATER AND SANITATION ENABLED, AMONG OTHER THINGS:

- A 130,000 people to have access to clean water
- B 1,300,000 people to have access to clean water
- C 1.3 billion people to have access to clean water

10 - WHAT IS THE MAIN USE OF THE WATER THAT IS TAKEN FROM LAKES, RIVERS AND AQUIFERS?

- A For washing
- B For crop irrigation
- C For making clothes



7 AFFORDABLE AND CLEAN ENERGY



AFFORDABLE AND CLEAN ENERGY

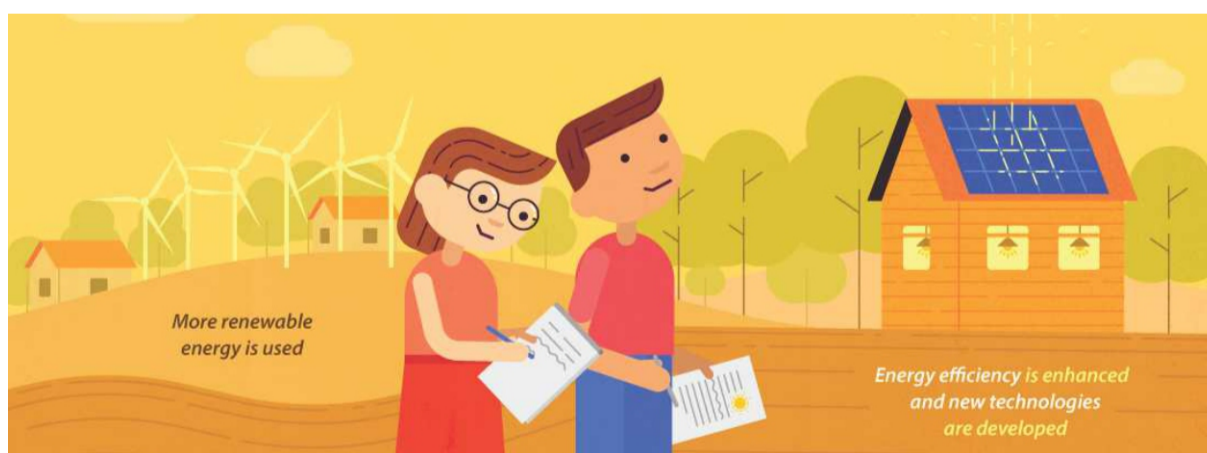
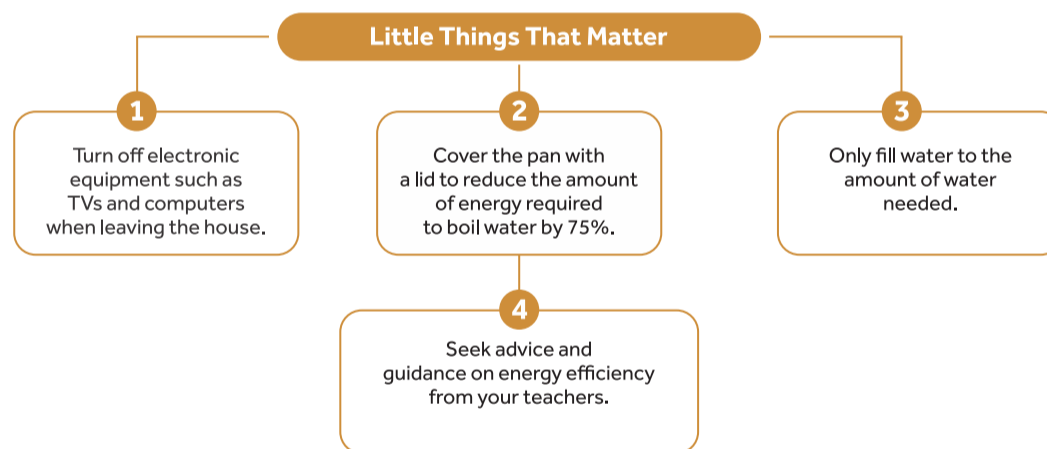
- For many decades, fossil fuels such as coal, oil or gas have been major sources of electricity production
- But burning carbon fuels produces large amounts of greenhouse gases which cause climate change and have harmful impacts on people's well-being and the environment.
- Global electricity use is rising rapidly. In a nutshell, without a stable electricity supply, countries will not be able to power their economies.
- More focused attention is needed to improve access to clean and safe cooking fuels and technologies for 3 billion people. I have access to electricity.





The Targets

- 7.1 By 2030, ensure **universal access to affordable, reliable and modern energy services**
- 7.2 By 2030, **increase substantially the share of renewable energy in the global energy mix**
- 7.3 By 2030, **double the global rate of improvement in energy efficiency**
- 7a. By 2030, enhance international cooperation to facilitate access to clean energy research and technology, including renewable energy, energy efficiency and advanced and cleaner fossil-fuel technology, and **promote investment in energy infrastructure and clean energy technology**
- 7b. By 2030, **expand infrastructure and upgrade technology for supplying modern and sustainable energy services for all in developing countries, in particular least developed countries, small island developing States, and land-locked developing countries, in accordance with their respective programmes of support**





AFFORDABLE AND CLEAN ENERGY

Access to energy is a vital precondition for achieving many of the Sustainable Development Goals, and is by no means limited to the energy sector. It also contributes to eliminating poverty, increasing food production, supplying clean drinking water, improving public health, developing the education and training system, supporting the economy and advancing the position of women.

1 - HUMANKIND GENERATES BETWEEN:

- A 1 and 40 tonnes of waste per second (equivalent of one full HGV)
- B 41 to 79 tonnes of waste per second
- C 80 to 130 tonnes of waste per second (a blue whale weighs between 80 and 200 tonnes)

2 - CAN WASTE BE TRANSFORMED INTO ENERGY?

- A Yes
- B No

3 - CLEAN ENERGY CANNOT BE PRODUCED WITH WHICH OF THE FOLLOWING:

- | | |
|---------------------------------|-------------------------------|
| <input type="radio"/> A Nuclear | <input type="radio"/> D Wind |
| <input type="radio"/> B Sun | <input type="radio"/> E Waves |
| <input type="radio"/> C Oil | <input type="radio"/> F Coal |

4 - SOME ENERGY IS CONSIDERED RENEWABLE. WHY?

- A Because it is clean
- B Because it is new
- C Because it can be rapidly replenished by nature

5 - WHICH IS THE MOST USED RENEWABLE ENERGY IN THE WORLD:

- A Solar power
- B Hydropower
- C Wind power

6 - WHAT DOES ENERGY EFFICIENCY MEAN?

- A When the light of a bulb is very bright
- B When you can use electricity without worrying about consumption
- C When a device or building uses relatively little energy to run

7 - HOW MANY PEOPLE DO NOT HAVE ACCESS TO ELECTRICITY IN THE WORLD?

- A 800 million (or the population of Europe)
- B 1.3 billion (or the population of China)
- C 3 billion (or the population of China, India and the United States combined)

8 - THERE ARE NUMEROUS GREENHOUSE GASES. WHICH OF THE FOLLOWING IS NOT ONE OF THEM?

- | | |
|--------------------------------------|---|
| <input type="radio"/> A Water vapour | <input type="radio"/> D Carbon dioxide |
| <input type="radio"/> B Oxygen | <input type="radio"/> E Nitrous oxide or laughing gas |
| <input type="radio"/> C Methane | |

9 - IN 2015, WHICH COUNTRIES INVESTED THE MOST IN RENEWABLE ENERGIES?

- A Japan, where renewable energies account for 7% of the energy mix
- B The United States, with 44 billion dollars invested in renewable energies
- C China, with 36% of global investment in renewable energies

10 - HOW CAN WASTE BE TRANSFORMED?

- A Composting
- B Methanization
- C Recycling
- D Sending to landfill



WORKSHEET / GOAL # 7

1

Commitment

I personally commit to

Dotted lines for writing

2

Suggest 3 ways you can make a difference on this goal in your community

Dotted lines for writing

3

Your expectations from the government in relation to the Goal.

Dotted lines for writing



Scan the QR code to connect with our SDG Clubs



8 GOOD JOBS AND ECONOMIC GROWTH



DECENT JOBS AND ECONOMIC GROWTH

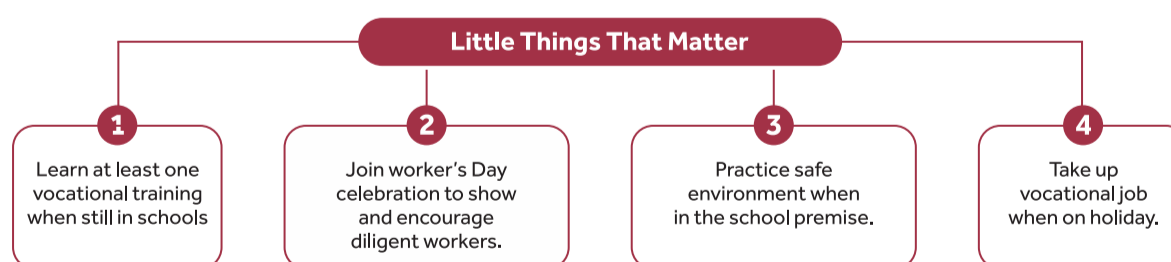
- Decent work means opportunities for everyone to get work that is productive
- Delivers a fair income, security in the workplace and social protection for families, better prospects for personal development and social integration.
- It is important that all women and men are given equal opportunities in the workplace.
- A continued lack of decent work opportunities, insufficient investments and under-consumption lead to an erosion of the basic social contract underlying democratic societies: that all must share in progress.





8 The Targets

- 8.1 **Sustain per capita economic growth** in accordance with national circumstances and, in particular, at least 7 per cent gross domestic product growth per annum in the least developed countries
- 8.2 **Achieve higher levels of economic productivity through diversification, technological upgrading and innovation**, including through a focus on **high-value added and labour-intensive sectors**
- 8.3 **Promote development-oriented policies that support productive activities, decent job creation, entrepreneurship, creativity and innovation, and encourage the formalization and growth of micro-, small- and medium-sized enterprises**, including through access to financial services
- 8.4 Improve progressively, through 2030, global resource **efficiency in consumption and production and endeavour to decouple economic growth from environmental degradation**, in accordance with the 10-year framework of programmes on sustainable consumption and production, with developed countries taking the lead
- 8.5 By 2030, achieve full and **productive employment and decent work for all women and men**, including for young people and persons with disabilities, and equal pay for work of equal value
- 8.6 By 2020, substantially **reduce the proportion of youth not in employment, education or training**
- 8.7 Take immediate and **effective measures to eradicate forced labour, end modern slavery and human trafficking and secure the prohibition and elimination of the worst forms of child labour**, including recruitment and use of child soldiers, and by 2025 end child labour in all its forms
- 8.8 **Protect labour rights and promote safe and secure working environments for all workers**, including migrant workers, in particular women migrants, and those in precarious employment
- 8.9 By 2030, devise and implement policies to **promote sustainable tourism that creates jobs and promotes local culture and products**
- 8.10 Strengthen the capacity of domestic financial institutions to **encourage and expand access to banking, insurance and financial services** for all
- 8a Increase Aid for Trade support for developing countries, in particular least developed countries, including through the Enhanced Integrated Framework for Trade-Related Technical Assistance to Least Developed Countries
- 8b By 2020, **develop and operationalize a global strategy for youth employment** and implement the Global Jobs Pact of the International Labour Organization





DECENT WORK AND ECONOMIC GROWTH

Goal 8 is aimed at economic growth, increased productivity and creating decent work. It aims to combat forced labour and put an end to modern slavery and human trafficking by 2030. In addition, as sustainable economic growth must not be at the expense of the environment, it anticipates using resources more effectively in production and consumption around the world and ensuring that economic growth no longer leads to environmental degradation.

1 - WHAT DOES SUSTAINABLE ECONOMIC GROWTH SEEK TO PRESERVE?

- A Increases in share prices
- B The environment
- C Decent work for children

2 - THE TERM "DECENT WORK" INVOLVES SEVERAL CRITERIA. WHAT ARE THESE?

- A The right not to work
- B Safety at work
- C Social protection for families
- D Unequal treatment of women and men
- E Appropriate remuneration

3 - HOW MANY UNEMPLOYED PEOPLE ARE THERE IN THE WORLD?

- A 20 million (or 0.3% of the world's population)
- B 200 million (or 3% of the world's population)
- C 2 billion (or 30% of the world's population)

4 - 168 MILLION CHILDREN AGED 5 TO 17 WORK AROUND THE WORLD. WHAT PROPORTION OF THESE WORK IN AGRICULTURE?

- A 20%
- B 40%
- C 60%

5 - TRUE OR FALSE? INTERNATIONAL MIGRANTS HAVE A POSITIVE IMPACT ON THE GLOBAL ECONOMY.

- A True
- B False

6 - HOW MANY JOBS NEED TO BE CREATED EACH YEAR TO KEEP UP WITH THE GROWTH IN THE WORLD'S ACTIVE POPULATION?

- A 3 million
- B 30 million
- C 300 million

7 - WHAT IS THE LINK BETWEEN EMPLOYMENT AND CLIMATE CHANGE?

- A The transition to a carbon neutral economy threatens a number of areas such as agriculture, the car industry and fossil fuels, etc.
- B The green economy is creating new occupations and new jobs
- C Both the above are true

8 - ONE WORKER DIES FROM A WORK-RELATED ACCIDENT OR DISEASE EVERY 15 SECONDS. WHAT IS THE MAIN CAUSE OF THESE DEATHS?

- A Accident on the way to work (journey from home)
- B Occupational disease
- C Accident or error at work

9 - THE GLOBAL RATE OF EMPLOYMENT FOR DISABLED PEOPLE IS:

- A Higher than that of able-bodied people
- B Lower than that of able-bodied people
- C The same as that of able-bodied people

10 - OF THE 197 COUNTRIES RECOGNIZED BY THE UN, HOW MANY HAVE ANTI-DISCRIMINATION LEGISLATION OR LEGISLATION THAT SPECIFICALLY REFERENCES THE DISABLED?

- A 45 countries
- B 97 countries
- C 139 countries



9 INDUSTRY, INNOVATION AND INFRASTRUCTURE



INDUSTRY, INNOVATION AND INFRASTRUCTURE

- Economic growth, social development and climate action are heavily dependent on investments in infrastructure, **sustainable industrial development and technological progress**.
- In the face of a rapidly changing global economic landscape and increasing inequalities, **sustained growth must include industrialization** that makes opportunities accessible to all people and supported by innovation and resilient infrastructure.





9 The Targets

- 9.1 **Develop quality, reliable, sustainable and resilient infrastructure**, including regional and trans-border infrastructure, to support economic development and human well-being, with a focus on affordable and equitable access for all
 - 9.2 Promote inclusive and sustainable industrialization and, by 2030, **significantly raise industry's share of employment and gross domestic product**, in line with national circumstances, and double its share in least developed countries
 - 9.3 **Increase the access of small-scale industrial and other enterprises**, in particular in developing countries, to financial services, including affordable credit, and their integration into value chains and markets
 - 9.4 By 2030, **upgrade infrastructure and retrofit industries to make them sustainable**, with increased resource-use efficiency and greater adoption of clean and environmentally sound technologies and industrial processes, with all countries taking action in accordance with their respective capabilities
 - 9.5 the number of research and development workers per 1 million people and **public and private research and development spending**
 - 9a **Facilitate sustainable and resilient infrastructure development** in developing countries through **enhanced financial, technological and technical support to African countries**, least developed countries, landlocked developing countries and Small Island developing States 18
 - 9b Support domestic technology development, research and innovation in developing countries, including by ensuring a conducive policy environment for, inter alia, **industrial diversification and value addition to commodities**
 - 9c significantly increase access to information and communications technology and strive to provide universal and **affordable access to the Internet in least developed countries by 2020**
- Enhance scientific research, upgrade the technological capabilities of industrial sectors** in all countries, in particular developing countries, including, by 2030, encouraging innovation and substantially increasing





INNOVATION AND INFRASTRUCTURE

Investment in infrastructure – transport, irrigation, energy, information and communication technologies – is essential to achieve sustainable development and community empowerment in many countries. It has long been known that growth in productivity, incomes and improvements in health and education require investment in infrastructure.

1 - WHICH IS THE "GREENEST" CITY IN THE WORLD?

- A Reykjavik (Iceland)
- B Montreal (Canada)
- C Paris (France)

2 - TRUE OR FALSE? TRADITIONAL IRRIGATION IS MORE ECONOMICAL AND RESPONSIBLE THAN DRIP FEED SYSTEMS.

- A True
- B False

3 - WHICH OF THESE INVENTIONS IS BEST AT COMBATTING CLIMATE CHANGE?

- A The electric car
- B The diesel car
- C The petrol car
- D The bicycle

4 - WHAT SHARE OF THE POPULATION IN DEVELOPING COUNTRIES HAS NO INTERNET ACCESS?

- A 95%
- B 70%
- C 50%

5 - TRUE OR FALSE? BETWEEN 1 AND 1.5 BILLION PEOPLE TODAY HAVE NO ACCESS TO RELIABLE TELECOMMUNICATIONS SERVICES.

- A True
- B False

6 - WHAT CHARACTERIZES A SUSTAINABLE COMPANY?

- A It operates on a logic of sustainable development
- B It has been operating for a long time
- C It is fully respectful of the environment
- D It produces goods and services that last over time

7 - BY 2030, THE RENEWABLE ENERGIES SECTOR COULD HAVE CREATED:

- A 5,000 jobs
- B 5 million jobs
- C 20 million jobs

8 - WHAT IS ECO-DESIGN?

- A Design in line with the economy
- B Design that includes the environment from the very start of a project or product
- C Design that achieves the most savings and reduction in costs

9 - FIND THE ODD ONES OUT. WHICH OF THE FOLLOWING IS NOT THE PURPOSE OF INTEGRATING ECO-DESIGN INTO A PROJECT?

- A To reduce its environmental impact
- B To reduce the company's profits
- C To optimize a project or product
- D To enable savings to be made

10 - IN LOW-INCOME COUNTRIES, INFRASTRUCTURE CONSTRAINTS AFFECT COMPANY PRODUCTIVITY:

- A By less than 10%
- B By nearly 40%



10 REDUCED INEQUALITIES



REDUCED INEQUALITIES

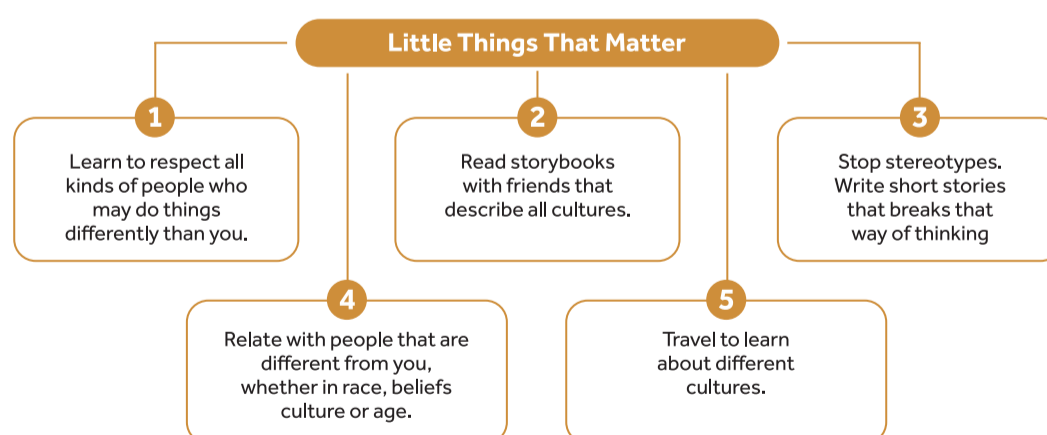
- Inequalities based on income, sex, age, disability, sexual orientation, race, class, ethnicity, religion and opportunity continue to persist across the world, within and among countries.
- Inequality threatens long-term social and economic development, harms poverty reduction and destroys people's sense of fulfilment and self-worth.
- This, in turn, can breed crime, disease and environmental degradation.
- We cannot achieve sustainable development and make the planet better for all if people are excluded from opportunities, services, and the chance for a better life.
- Despite progress in some areas, income inequality continues to rise in many parts of the world.





10 The Target

- 10.1 By 2030, progressively **achieve and sustain income growth of the bottom 40 per cent of the population** at a rate higher than the national average
- 10.2 By 2030, **empower and promote the social, economic and political inclusion** of all, irrespective of age, sex, disability, race, ethnicity, origin, religion or economic or other status
- 10.3 Ensure equal **opportunity and reduce inequalities of outcome**, including by **eliminating discriminatory laws, policies and practices** and **promoting appropriate legislation, policies and action in this regard**
- 10.4 **Adopt policies, especially fiscal, wage and social protection policies**, and progressively achieve greater equality
- 10.5 **Improve the regulation and monitoring of global financial markets and institutions** and strengthen the implementation of such regulations
- 10.6 **Ensure enhanced representation and voice for developing countries in decision-making** in global international economic and financial institutions in order to deliver more effective, credible, accountable and legitimate institutions
- 10.7 **Facilitate orderly, safe, regular and responsible migration and mobility of people**, including through the implementation of planned and well-managed migration policies
- 10.a **Implement the principle of special and differential treatment for developing countries**, in particular least developed countries, in accordance with World Trade Organization agreements
- 10.b **Encourage official development assistance and financial flows**, including foreign direct investment, to States where the need is greatest, in particular least developed countries, African countries, Small Island developing States and landlocked developing countries, **in accordance with their national plans and programmes**
- 10.c By 2030, **reduce to less than 3 per cent the transaction costs of migrant remittances** and eliminate remittance corridors with costs higher than 5 per cent





REDUCED INEQUALITIES

Inequality of income is a major challenge that demands international solutions. This means improving the regulations that govern financial institutions and markets, channelling development assistance to populations at most need and helping people migrate safely to enable them to benefit from opportunities.

1 - INCOME INEQUALITY:

- A Increases economic growth and poverty
- B Reduces poverty and economic growth
- C Reduces economic growth and increases poverty

2 - TRUE OR FALSE? 75% OF THE POPULATION LIVE IN SOCIETIES WHERE INCOMES ARE MORE UNEQUALLY DISTRIBUTED THAN IN THE 1990s.

- A True
- B False

3 - IF EVERYONE ON EARTH LIVED LIKE THE FRENCH, HOW MANY PLANET EARTHS WOULD BE NEEDED TO MEET THEIR NEEDS?

- A 2 planets
- B 3 planets
- C 6 planets

4 - HOW MANY OF THE POOREST PEOPLE IN THE WORLD BENEFIT FROM SOCIAL PROTECTION?

- A All
- B One-half
- C One-third

5 - GLOBALIZATION OF TRADE AND PRODUCTION MEANS THAT INEQUALITIES BETWEEN DEVELOPED AND DEVELOPING COUNTRIES WILL:

- A Decline because of relocation to developing countries
- B Increase as the profits will be concentrated in developed countries
- C Disappear naturally due to the law of the global market

6 - AFRICA PRODUCES 75% OF THE WORLD'S COCOA. WHAT PROPORTION OF THE INCOME DOES IT RECEIVE FROM THE MANUFACTURE OF CHOCOLATE?

- A 2%
- B 45%
- C 75%

7 - A TRIP FROM PARIS TO LONDON COSTS AROUND EUR 150. HOW MUCH DOES THE SAME TRIP COST FOR A MIGRANT?

- A EUR 5
- B EUR 150
- C EUR 10,000

8 - TO WHAT EXTENT DID INEQUALITY OF INCOME BETWEEN RICHEST AND POOREST INCREASE IN DEVELOPING COUNTRIES BETWEEN 1990 AND 2010?

- A 11%
- B 25%
- C 42%

9 - WOMEN IN URBAN AREAS ARE:

- A Twice as likely to die during childbirth than those living in rural areas
- B Three times less likely to die during childbirth than those living in rural areas
- C At the same risk of dying during childbirth as those living in rural areas

10 - WHAT PROPORTION OF DOMESTIC WORKERS AROUND THE WORLD ARE WOMEN?

- A 34%
- B 68%
- C 83%



11 SUSTAINABLE CITIES AND COMMUNITIES



SUSTAINABLE CITIES AND COMMUNITIES

- The world is becoming increasingly urbanized.
- Since 2007, more than half the world's population has been living in cities.
- It is projected to rise to 60 per cent by 2030.
- Cities and metropolitan areas are powerhouses of economic growth— contributing about 60 per cent of global GDP.
- They also account for about 70 per cent of global carbon emissions and over 60 per cent of resource use.





The Targets

- 11.1 By 2030, **ensure access for all to adequate, safe and affordable housing** and basic services and upgrade slums
- 11.2 By 2030, **provide access to safe, affordable, accessible and sustainable transport systems for all**, improving road safety, notably by expanding public transport, with special attention to the needs of those in vulnerable situations, women, children, persons with disabilities and older persons
- 11.3 By 2030, **enhance inclusive and sustainable urbanization and capacity for participatory, integrated and sustainable human settlement planning and management in all countries**
- 11.4 **Strengthen efforts to protect and safeguard the world's cultural and natural heritage**
- 11.5 By 2030, **significantly reduce the number of deaths and the number of people affected and substantially decrease the direct economic losses relative to global gross domestic product caused by disasters, including water-related disasters, with a focus on protecting the poor and people in vulnerable situations**
- 11.6 By 2030, **reduce the adverse per capita environmental impact of cities**, including by paying special attention to air quality and municipal and other waste management
- 11.7 By 2030, **provide universal access to safe, inclusive and accessible, green and public spaces**, in particular for women and children, older persons and persons with disabilities
- 11a **Support positive economic, social and environmental links between urban, semi-urban and rural areas** by strengthening national and regional development planning
- 11b By 2020, **substantially increase the number of cities and human settlements adopting and implementing integrated policies and plans towards inclusion, resource efficiency, mitigation and adaptation to climate change, resilience to disasters**, and develop and implement, in line with the Sendai Framework for Disaster Risk Reduction 2015-2030, holistic disaster risk management at all levels
- 11c **Support least developed countries**, including through financial and technical assistance, **in building sustainable and resilient buildings utilizing local materials**





CITIES AND COMMUNITIES

Goal 11 is aimed at reducing the pollutant load of citizens, with a particular focus on air quality and waste management. Town planning must be more inclusive and sustainable, developing participatory, integrated and sustainable urbanization policies. Everyone should have access to safe green, public spaces, particularly women and children, the elderly and disabled. Everyone should have an affordable and safe home and transport systems.

1 - IN RELATION TO A 10 KM JOURNEY IN TOWN, PUT THE FOLLOWING MEANS OF TRANSPORT IN ORDER FROM LEAST TO MOST POLLUTING.

- | | |
|---------------------------------|-----------------------------------|
| <input type="radio"/> Tram | <input type="radio"/> Car |
| <input type="radio"/> Motorbike | <input type="radio"/> Bicycle |
| <input type="radio"/> Bus | <input type="radio"/> Underground |

2 - IN 1990, 10 CITIES IN THE WORLD HAD MORE THAN 10 MILLION INHABITANTS. BY 2018 THERE WERE:

- A 10
- B 21
- C 47

3 - 95% OF URBAN EXPANSION WILL TAKE PLACE IN

- A Developed countries
- B Developing countries

4 - WHAT PROPORTION OF THE WORLD'S POPULATION CURRENTLY LIVES IN URBAN AREAS?

- A 54% of the world's population
- B 20% of the world's population
- C 3 billion, or 35% of the world's population

5 - CITIES COVER 3% OF THE EARTH'S LAND MASS BUT PRODUCE WHAT PROPORTION OF GLOBAL CARBON DIOXIDE EMISSIONS?

- A 3% of carbon dioxide emissions
- B 50% of carbon dioxide emissions
- C 70% of carbon dioxide emissions

6 - HOW MANY PEOPLE LIVE IN SHANTY TOWNS AROUND THE WORLD?

- A 75 million, or 1 in 100 people
- B 900 million, or 1 in 8 people
- C 3 billion, or 2 in 5 people

7 - BY 2030, IF NOTHING IS DONE, HOW MANY PEOPLE WILL BE LIVING IN SHANTY TOWNS?

- A 76 million, or 1 in 100 people
- B 900 million, or 1 in 8 people
- C 3 billion, or 2 in 5 people

8 - FIND THE ODD ONE OUT. RAPID URBANIZATION PUTS PRESSURE ON:

- A Freshwater reserves
- B Economic growth
- C Water supply systems
- D Quality of life
- E Public health

9 - A "RESILIENT" TOWN IS ...

- A A town reluctant to change
- B A town capable of resisting and adapting to the changes it undergoes
- C A town that changes water, gas or electricity supplier

10 - WHAT IS URBAN AND PERIURBAN HORTICULTURE?

- A Growing plants and raising animals in and around towns
- B The cultivation of horseradish, which has a wealth of health benefits
- C A relaxing therapy



12 RESPONSIBLE CONSUMPTION AND PRODUCTION



RESPONSIBLE CONSUMPTION AND PRODUCTION

- Economic and social progress over the last century has been accompanied by environmental degradation.
- This has been endangering the very systems on which our future development and very survival depend.
- If we don't act to change our consumption and production patterns, we will cause irreversible damage to our environment.





12 The Targets

- 12.1 **Implement the 10-year framework of programmes on sustainable consumption and production**, all countries taking action, with developed countries taking the lead, taking into account the development and capabilities of developing countries
- 12.2 By 2030, **achieve the sustainable management and efficient use of natural resources**
- 12.3 By 2030, halve per capita global food waste at the retail and consumer levels and **reduce food losses along production and supply chains, including post-harvest losses**
- 12.4 By 2020, **achieve the environmentally sound management of chemicals and all wastes throughout their life cycle**, in accordance with agreed international frameworks, and significantly reduce their release to air, water and soil in order to minimize their adverse impacts on human health and the environment
- 12.5 By 2030, **substantially reduce waste generation through prevention, reduction, recycling and reuse**
- 12.6 **Encourage companies, especially large and transnational companies, to adopt sustainable practices** and to integrate sustainability information into their reporting cycle
- 12.7 **Promote public procurement practices that are sustainable**, in accordance with national policies and priorities
- 12.8 By 2030, ensure that people everywhere have the **relevant information and awareness for sustainable development and lifestyles** in harmony with nature
- 12a Support developing countries to **strengthen their scientific and technological capacity** to move towards more sustainable patterns of consumption and production
- 12b. Develop and implement **tools to monitor sustainable development impacts** for sustainable tourism that creates jobs and **promotes local culture and products**
- 12c Rationalize inefficient fossil-fuel subsidies that encourage wasteful consumption by **removing market distortions, in accordance with national circumstances**, including by restructuring taxation and phasing out those harmful subsidies, where they exist, to reflect their environmental impacts, taking fully into account the specific needs and conditions of developing countries and **minimizing the possible adverse impacts on their development in a manner that protects the poor and the affected communities**





12



RESPONSIBLE CONSUMPTION AND PRODUCTION

Responsible consumption and production is aimed at encouraging a more efficient use of resources and energy, providing lasting infrastructure, and ensuring access to basic services, green and decent jobs and a better quality of life for all. Responsible consumption and production aims to “do more, better with less”, increasing the net socio-economic gains derived from economic activities by reducing resource use, degradation and pollution throughout the life cycle.

1 - WHAT PROPORTION OF THE WORLD'S FOOD IS WASTED OR THROWN AWAY?

- A One-quarter of all food produced
- B One-third of all food produced
- C One-half of all food produced

2 - HOW MANY M³ OF WATER ARE USED UNNECESSARILY EACH YEAR IN THE PRODUCTION OF WASTED FOOD?

- A 250 m³
- B 25 km³
- C 250 km³

3 - OVERCONSUMPTION OF FOOD IS HARMFUL TO:

- A Your portfolio
- B The environment
- C Your health
- D The equitable sharing of food resources
- E All the above

4 - BY WHAT DATE IN 2017 HAD HUMANKIND CONSUMED MORE NATURAL RESOURCES THAN THE PLANET WAS CAPABLE OF PRODUCING?

- A 2 August
- B 10 October
- C 22 November

5 - IF THE ENTIRE WORLD'S POPULATION WERE TO USE ENERGY-EFFICIENT LIGHT BULBS, WE WOULD SAVE:

- A 12 million dollars a year
- B 120 million dollars a year
- C 120 billion dollars a year

6 - WHICH COUNTRY WAS THE FIRST TO BAN PLASTIC BAGS?

- A Denmark
- B Bangladesh
- C Ireland

7 - IF POLLINATING INSECTS, SUCH AS BEES, WERE TO DISAPPEAR, HOW MUCH WOULD IT COST TO REPLICATE THEIR JOB?

- A EUR 153,000
- B EUR 153 million
- C EUR 153 billion

8 - WHICH OF THE FOLLOWING SECTORS EMITS THE MOST GREENHOUSE GAS RESPONSIBLE FOR GLOBAL WARMING?

- A Transport
- B Industry
- C Construction

9 - WHAT IS AGROECOLOGY?

- A Farming techniques that respect the environment
- B Consumers directly picking their own fruit and vegetables
- C A medieval method of growing plants

10 - HOW MUCH WASTE ENDS UP IN THE SEA EVERY MINUTE AROUND THE WORLD?

- A The equivalent of 60 shopping trolleys
- B The equivalent of 180 shopping trolleys
- C The equivalent of 1,600 shopping trolleys



13 CLIMATE ACTION



CLIMATE ACTION

- As greenhouse gas levels continue to climb, climate change is occurring at much higher rates than anticipated, and its effects are evident worldwide.
- By addressing climate change, we can build a sustainable world for everyone.
- We need to act now as people's lives are really being affected by climate change
- Severe weather and rising sea levels are affecting people and their property in developed and developing countries.
- From a small farmer in the Philippines to a businessman in London, climate change is affecting everyone, especially the poor and vulnerable, as well as marginalized groups like women, children, and the elderly.





13 The Targets

- 13.1 **Strengthen resilience and adaptive capacity to climate-related hazards and natural disasters in all countries**
- 13.2 **Integrate climate change measures into national policies, strategies and planning**
- 13.3 **Improve education, awareness-raising and human and institutional capacity on climate change mitigation, adaptation, impact reduction and early warning**
- 13a **Implement the commitment undertaken by developed-country parties to the United Nations Framework Convention on Climate Change to a goal of mobilizing jointly \$100 billion annually by 2020 from all sources to address the needs of developing countries**
- 13b **Promote mechanisms for raising capacity for effective climate change-related planning and management in least developed countries and Small Island developing States, including focusing on women, youth and local and marginalized communities**





13



CLIMATE ACTION

Greenhouse gas emissions created by human activity have never been higher. The result of economic growth and increased population, climate change has widespread effects on human and natural systems in all countries and across all continents. With the warming of the atmosphere and the oceans, the amount of snow and ice has declined and sea levels are rising. Temperature on the Earth's surface is likely to increase during the 21st century and, if action is not taken, this increase could be more than three degrees Celsius by the end of the century.

1 - WHAT ENVIRONMENTAL BEHAVIOUR HELPS PROTECT THE PLANET?

- A Eating more and wasting less food
- B Eating "ugly" fruit and vegetables
- C Drinking less and using less water

2 - TRUE OR FALSE? THE GREENHOUSE EFFECT IS DUE TO HUMANS:

- A True, human activity causes greenhouse gas emissions
- B False, without the greenhouse effect life would not have been able to emerge and develop on Earth

3 - TRUE OR FALSE? WITHOUT GREENHOUSE GASES, THE TEMPERATURE WOULD BE -19°C:

- A True
- B False

4 - TRUE OR FALSE? HOLES IN THE OZONE LAYER ARE EXACERBATING CLIMATE CHANGE:

- A True
- B False

5 - WHAT PERCENTAGE OF GREENHOUSE GAS EMISSIONS ARE DUE TO AGRICULTURE?

- A 13%
- B 24%
- C 32%

6 - WITH EVERY ONE DEGREE INCREASE IN TEMPERATURE, GLOBAL CEREAL PRODUCTION DECLINES BY AROUND:

- A 2%
- B 5%
- C 9%

7 - SINCE THE START OF THE 21ST CENTURY, HOW MANY YEARS HAVE BEEN CLASSIFIED AS THE HOTTEST ON RECORD?

- A 5 years
- B 9 years
- C 16 years

8 - IN 2015, AT THE COP21 IN PARIS, HEADS OF STATE UNDERTOOK TO PUT MEASURES IN PLACE TO LIMIT GLOBAL WARMING TO...

- A + 0.5 degrees Celsius by 2100
- B + 2 degrees Celsius by 2100
- C + 5 degrees Celsius by 2100

9 - SINCE 1979, SEA ICE HAS DIMINISHED BY:

- A 10,000 km² each decade (or 1,000 football pitches)
- B 100,000 km² each decade (or 10,000 football pitches)
- C 1 million km² each decade (or 100,000 football pitches)

10 - SINCE 1990, GLOBAL CARBON DIOXIDE (CO₂) EMISSIONS HAVE INCREASED BY ALMOST:

- A 15%
- B 25%
- C 50%



LIFE BELOW WATER

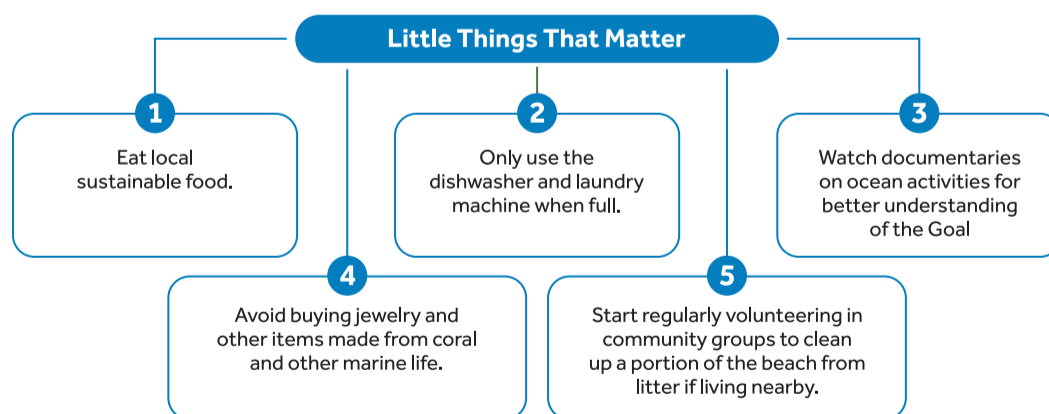
- Oceans provide key natural resources including food, medicines, biofuels and other products.
- They help with the breakdown and removal of waste and pollution, and their coastal ecosystems act as buffers to reduce damage from storms.
- Maintaining healthy oceans supports climate change mitigation and adaptation efforts.
- Have you been to the seaside? It's also a great place for tourism and recreation. Even more, Marine Protected Areas contribute to poverty reduction by increasing fish catches and income, and improving health.





14 The Targets

- 14.1 By 2025, **prevent and significantly reduce marine pollution of all kinds**, in particular from land-based activities, including marine debris and nutrient pollution
- 14.2 By 2020, **sustainably manage and protect marine and coastal ecosystems to avoid significant adverse impacts**, including by strengthening their resilience, and take action for their restoration in order to achieve healthy and productive oceans
- 14.3 Minimize and address the impacts of ocean acidification, including **through enhanced scientific cooperation at all levels**
- 14.4 By 2020, effectively regulate harvesting and end overfishing, illegal, unreported and unregulated fishing and destructive fishing practices and implement **science-based management plans, in order to restore fish stocks in the shortest time feasible**, at least to levels that can produce maximum sustainable yield as determined by their biological characteristics
- 14.5 By 2020, conserve at least **10 per cent of coastal and marine areas**, consistent with national and international law and based on the best available scientific information
- 14.6 By 2020, prohibit certain forms of **fisheries subsidies which contribute to overcapacity and overfishing**, eliminate subsidies that contribute to illegal, unreported and unregulated fishing and refrain from introducing new such subsidies, recognizing that appropriate and effective special and differential treatment for developing and least developed countries should be an integral part of the World Trade Organization fisheries subsidies negotiation
- 14.7 By 2030, **increase the economic benefits to Small Island developing States and least developed countries from the sustainable use of marine resources, including through sustainable management of fisheries, aquaculture and tourism**
- 14a Increase scientific knowledge, develop research capacity and transfer marine technology, taking into account the Intergovernmental Oceanographic Commission Criteria and Guidelines on the Transfer of Marine Technology, **in order to improve ocean health and to enhance the contribution of marine biodiversity to the development of developing countries**, in particular small island developing States and least developed countries
- 14b **Provide access for small-scale artisanal fishers to marine resources and markets**
- 14c **Enhance the conservation and sustainable use of oceans and their resources** by implementing international law as reflected in UNCLOS, which provides the legal framework for the conservation and sustainable use of oceans and their resources, as recalled in paragraph 158 of The Future We Want





LIFE BELOW WATER

The world's oceans – their temperature, chemical composition, currents and life – are the source of global systems that make the Earth habitable for humans. Our rainwater, drinking water, weather, climate, coasts, a large part of our food and even the oxygen we breathe are all, at the end of the day, supplied and regulated by the sea. Throughout history, the seas and oceans have been essential to trade and transport. Careful management of this vital world resource is key to a sustainable future.

1 - ALONG WITH THE FORESTS, WHAT ARE KNOWN AS THE "LUNGS OF THE EARTH"?

- A The Himalayas
- B The oceans
- C Volcanoes

2 - TRUE OR FALSE? AT THE CURRENT RATE, THERE WILL BE MORE PLASTIC IN THE OCEANS THAN FISH BY 2050.

- A True
- B False

3 - SINCE 1950, THE SEA BIRD POPULATION HAS FALLEN BY:

- A 60%
- B 70%
- C 80%

4 - WHAT PERCENTAGE OF MARINE SPECIES HAVE WE IDENTIFIED?

- A Around 5%
- B Around 50%
- C Over 80%

5 - THE DISAPPEARANCE OF MARINE SPECIES IS DUE TO:

- A Overfishing
- B Sea pollution
- C Global warming
- D All the above

6 - WHAT PROPORTION OF COMMERCIAL FISHERIES ARE OVER OR FULLY EXPLOITED?

- A 2%
- B 51%
- C 80%

7 - WHAT IS SUSTAINABLE FISHING?

- A Fishing that respects fish stocks and their renewal
- B Fishing that enables fisher people to be paid properly
- C Fishing that bans certain harmful practices
- D All the above

8 - HOW MANY PEOPLE DEPEND ON MARINE BIODIVERSITY FOR THEIR LIVELIHOODS?

- A 500 million
- B 1 billion
- C More than 3 billion

9 - WHAT PROPORTION OF GREENHOUSE GASES DO THE OCEANS ABSORB?

- A 5%
- B 15%
- C 30%

10 - FOR WHICH NGO DID THE ARTIST PENELOPE BAGIEU ILLUSTRATE THE PETITION "TAKE 5 MINUTES TO SIGN, MY FRIEND" DENOUNCING THE EVILS OF OVERFISHING?

- A Bloups
- B Léon Blum
- C Bloom



15 LIFE ON LAND



LIFE ON LAND

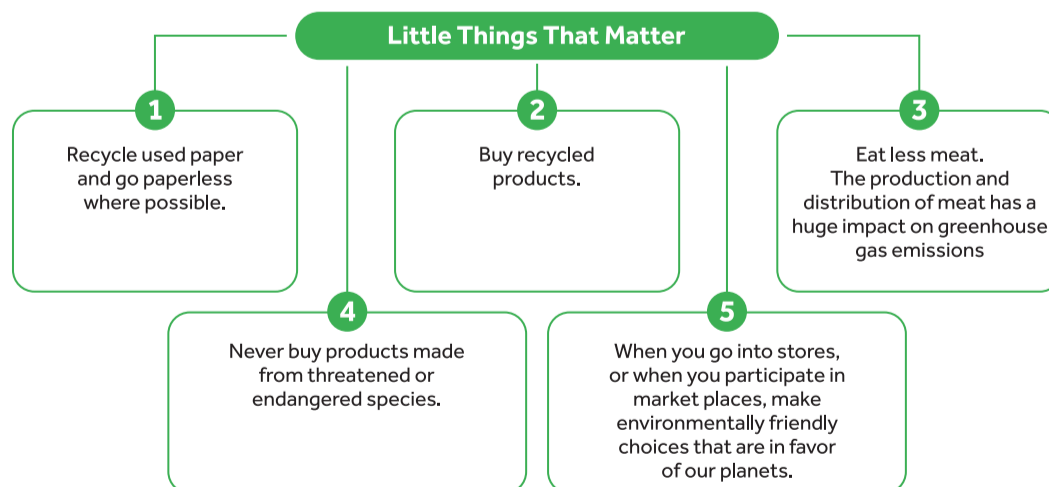
- To sustainably manage forests, combat desertification, halt and reverse land degradation, and halt biodiversity loss.
- Forests cover nearly 31 per cent of our planet's land area. From the air we breathe, to the water we drink, to the food we eat - forests sustain us.
- Around 1.6 billion people depend on forests for their livelihood.
- Almost 75 per cent of the world's poor are affected directly by land degradation.
- Forests are home to more than 80 per cent of all terrestrial species of animals, plants and insects.
- Biodiversity is declining faster than at any other time in human history.





15 The Targets

- 15.1 **By 2020, ensure the conservation, restoration and sustainable use of terrestrial and inland freshwater ecosystems and their services**, in particular forests, wetlands, mountains and drylands, in line with obligations under international agreements
- 15.2 By 2020, promote the implementation of sustainable management of all types of forests, halt deforestation, restore degraded forests and **substantially increase afforestation and reforestation globally**
- 15.3 By 2030, **combat desertification, restore degraded land and soil**, including land affected by desertification, drought and floods, and **strive to achieve a land degradation-neutral world**
- 15.4 By 2030, **ensure the conservation of mountain ecosystems, including their biodiversity**, in order to enhance their capacity to provide benefits that are essential for sustainable development
- 15.5 **Take urgent and significant action to reduce the degradation of natural habitats**, halt the loss of biodiversity and, by 2020, protect and prevent the extinction of threatened species
- 15.6 Promote **fair and equitable sharing of the benefits arising from the utilization of genetic resources** and promote appropriate access to such resources, as internationally agreed
- 15.7 **Take urgent action to end poaching and trafficking of protected species** of flora and fauna and address both demand and supply of illegal wildlife products
- 15.8 By 2020, introduce measures to prevent the introduction and significantly **reduce the impact of invasive alien species on land and water ecosystems** and control or eradicate the priority species
- 15.9 By 2020, **integrate ecosystem and biodiversity values into national and local planning, development processes, poverty reduction strategies and accounts**
- 15a Mobilize and significantly increase **financial resources from all sources to conserve and sustainably use biodiversity and ecosystems**
- 15b Mobilize significant resources from all sources and at all levels to **finance sustainable forest management and provide adequate incentives to developing countries** to advance such management, including for conservation and reforestation
- 15c Enhance global **support for efforts to combat poaching and trafficking of protected species**, including by increasing the capacity of local communities to pursue sustainable livelihood opportunities





15



LIFE ON LAND

Deforestation and desertification – caused by human activity and climate change – are posing major challenges to sustainable development and have negative consequences for the life and livelihoods of millions of people fighting poverty. Goal 15 aims to protect and restore terrestrial ecosystems and to use them sustainably, sustainably managing forests, combatting desertification, halting and reversing the process of land degradation and biodiversity loss.

1 - HOW MANY HECTARES OF FOREST ARE DISAPPEARING EVERY YEAR?

- A 1,300 hectares (1,530 football pitches)
- B 13,000 hectares (15,300 football pitches)
- C 13 million hectares (15 million football pitches)

2 - WHAT IS THE MAIN REASON FOR FELLING TREES NOWADAYS?

- A To increase farmland
- B To make paper
- C For heating

3 - HOW MANY PEOPLE RELY ON FORESTS FOR THEIR LIVELIHOOD AROUND THE WORLD?

- A 1 in 100
- B 1 in 20
- C 1 in 5

4 - WHAT PROPORTION OF GLOBAL FOOD IS MADE UP OF PLANTS?

- A 5%
- B 45%
- C 80%

5 - FORESTS PLAY AN ESSENTIAL ROLE IN COMBATTING CLIMATE CHANGE BECAUSE:

- A They are spaces to walk in
- B The trees produce oxygen
- C We need timber for construction

6 - BIODIVERSITY IS:

- A All living things on Earth
- B Organic produce available in the shops
- C All plants, trees, flowers... in our forests

7 - WHAT IS ARABLE LAND?

- A It is land that can be worked or cultivated
- B It is land on the African continent
- C It is a rabbit-reproducing area

8 - OF ALL KNOWN ANIMAL SPECIES...

- A 3% are already extinct and 12% are facing extinction
- B 6% are already extinct and 16% are facing extinction
- C 8% are already extinct and 22% are facing extinction

9 - HOW MANY CULTIVATED PLANTS HAVE DISAPPEARED IN THE LAST CENTURY?

- A 25% of cultivated plants
- B 50% of cultivated plants
- C 75% of cultivated plants

10 - THE AFRICAN ELEPHANT POPULATION WAS ESTIMATED AT 1.3 MILLION IN 1970. HOW MANY IS IT TODAY?

- A 1 million
- B 350,000
- C 20,000



16 PEACE, JUSTICE AND STRONG INSTITUTIONS



PEACE, JUSTICE AND STRONG INSTITUTIONS

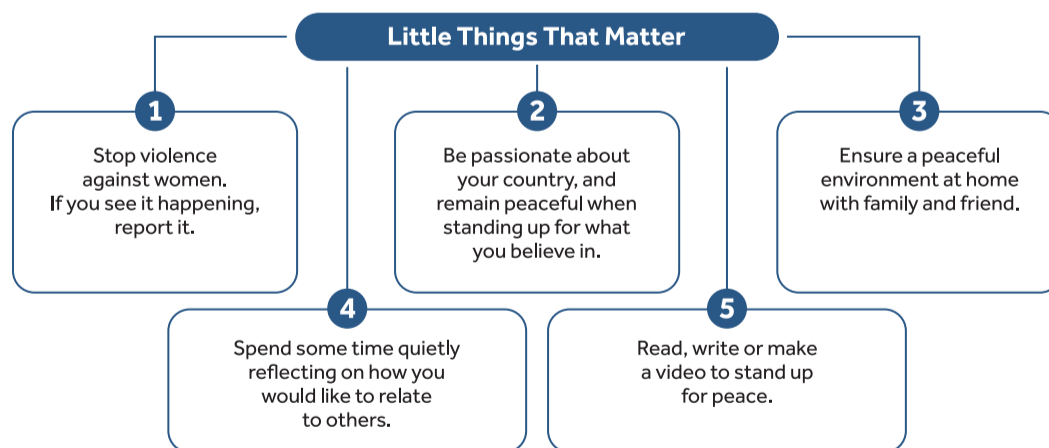
- Promote peaceful and inclusive societies for sustainable development.
- Provide access to justice for all and build effective, accountable and inclusive institutions at all levels.
- Peaceful, just and inclusive societies are necessary to achieve the Sustainable Development Goals (SDGs).
- People everywhere need to be free of fear from all forms of violence and feel safe as they go about their lives whatever their ethnicity, faith or sexual orientation.
- In order to advance the SDGs, we need effective and inclusive public institutions that can deliver quality education and healthcare, fair economic policies and inclusive environmental protection.





16 The Targets

- 16.1 Significantly **reduce all forms of violence** and related death rates everywhere.
- 16.2 End abuse, exploitation, trafficking and **all forms of violence against and torture of children**.
- 16.3 **Promote the rule of law** at the national and international levels and **ensure equal access to justice for all**.
- 16.4 By 2030, significantly reduce illicit financial and arms flows, strengthen the recovery and return of stolen assets and **combat all forms of organised crime**.
- 16.5 Substantially reduce **corruption and bribery in all their forms**.
- 16.6 Develop effective, accountable and **transparent institutions at all levels**.
- 16.7 Ensure **responsive, inclusive, participatory and representative** decision-making at all levels.
- 16.8 Broaden and strengthen **the participation of developing countries** in the institutions of global governance.
- 16.9 By 2030, provide **legal identity for all**, including birth registration.
- 16.10 Ensure **public access to information and protect fundamental freedoms**, in accordance with national legislation and international agreements.
- 16a **Strengthen relevant national institutions**, including through international cooperation, for building capacity at all levels, in particular in developing countries, **to prevent violence and combat terrorism and crime**.
- 16b Promote and enforce **non-discriminatory laws and policies for sustainable development**.





PEACE, JUSTICE AND STRONG INSTITUTIONS

The 16th Sustainable Development Goal focuses on promoting peaceful and inclusive societies, access to justice for all and building accountable and effective institutions at all levels.

1 - A BLUE HELMET IS:

- A A UN peacekeeping soldier
- B A maritime police officer
- C A cyclist

2 - A DEMOCRACY IS A COUNTRY GOVERNED BY:

- A An educated and rich group of people
- B Representatives elected by the inhabitants
- C A president for life

3 - OF THE 197 COUNTRIES IN THE WORLD, HOW MANY WERE CONSIDERED TO BE AT PEACE IN 2016?

- A 10
- B 30
- C 50

4 - WHAT WAS THE UN'S GLOBAL PEACEKEEPING BUDGET FOR 2017?

- A 6.8 billion dollars
- B 100 billion dollars
- C 1,747 billion dollars

5 - WHAT DO THE US, RUSSIA, CHINA, THE UNITED KINGDOM AND FRANCE ALL HAVE IN COMMON?

- A They are the countries that sell the most arms in the world
- B They are the countries that finance the most peace in the world
- C They are the countries that finance the most peace and the most war in the world

6 - WHICH INSTITUTIONS ARE MOST AFFECTED BY CORRUPTION IN THE WORLD?

- A Education and health
- B Justice and the police
- C The banks and the audio-visual sector

7 - HOW MANY CHILDREN LIVE IN REGIONS THREATENED BY CONFLICT?

- A 1 in 100, or 22 million children
- B 1 in 25, or 88 million children
- C 1 in 9, or 230 million children

8 - WHAT DOES FAIR TRADE OFFER PRODUCERS?

- A The same fixed prices everywhere in the world
- B Fair prices and a decent salary
- C The right to sell their produce abroad

9 - WHAT IS A TAX HAVEN?

- A A place where you pay little or no taxes
- B A small island
- C A public garden

10 - HOW MANY CHILDREN AGED 6 TO 17 LIVE IN A COUNTRY WHERE CORPORAL PUNISHMENT IS NOT COMPLETELY BANNED IN SCHOOL?

- A 1 in 10
- B 1 in 5
- C 1 in 2



17 PARTNERSHIPS FOR THE GOALS



PARTNERSHIPS FOR THE GOALS

- To revitalize the global partnership for sustainable development.
- In 2015, world leaders adopted the 2030 Agenda for Sustainable Development that aims to end poverty, tackle inequalities and combat climate change.
- We need everyone to come together—governments, civil society, scientists, academia and the private sector— to achieve the sustainable development goals.





FINANCE

- 17.1 Strengthen domestic resource mobilization, including through international **support to developing countries, to improve domestic capacity for tax and other revenue collection**
- 17.2 Developed countries to implement fully their official development assistance commitments, including the commitment by many developed countries to achieve the target of 0.7 per cent of ODA/GNI to developing countries and 0.15 to 0.20 per cent of ODA/GNI to least developed countries **ODA providers are encouraged to consider setting a target to provide at least 0.20 per cent of ODA/GNI to least developed countries**
- 17.3 additional **financial resources for developing countries** from multiple sources
- 17.4 Assist developing countries in attaining long-term debt sustainability through coordinated policies aimed at fostering debt financing, debt relief and debt restructuring, as appropriate, and **address the external debt of highly indebted poor countries to reduce debt distress**
- 17.5 Adopt and implement investment promotion regimes **for least developed countries**

TECHNOLOGY

- 17.6 Enhance North-South, South-South and triangular regional and international cooperation on and access to science, technology and innovation and **enhance knowledge sharing on mutually agreed terms, including through improved coordination among existing mechanisms**, in particular at the United Nations level, and through a global technology facilitation mechanism
- 17.7 Promote the development, transfer, dissemination and diffusion of environmentally sound technologies to developing countries on favourable terms, including on concessional and preferential terms, as mutually agreed
- 17.8 Fully operationalize the technology bank and science, technology and innovation capacity-building mechanism for least developed countries by 2017 and **enhance the use of enabling technology, in particular information and communications technology**

CAPACITY BUILDING

- 17.9 Enhance international support for implementing effective and targeted capacity-building in developing countries to support national plans to implement all the sustainable development goals, including through North-South, South-South and triangular cooperation



TRADE

- 17.10 Promote a universal, rules-based, open, non-discriminatory and equitable multilateral trading system under the World Trade Organization, including through the conclusion of negotiations under its Doha Development Agenda
- 17.11 Significantly increase the exports of developing countries, in particular with a view to doubling the least developed countries' share of global exports by 2020
- 17.12 Realize timely implementation of **duty-free and quota-free market access on a lasting basis for all least developed countries, consistent with World Trade Organization decisions**, including by ensuring that preferential rules of origin applicable to imports from least developed countries are transparent and simple, and contribute to facilitating market access

SYSTEMIC ISSUES (POLICY AND INSTITUTIONAL COHERENCE)

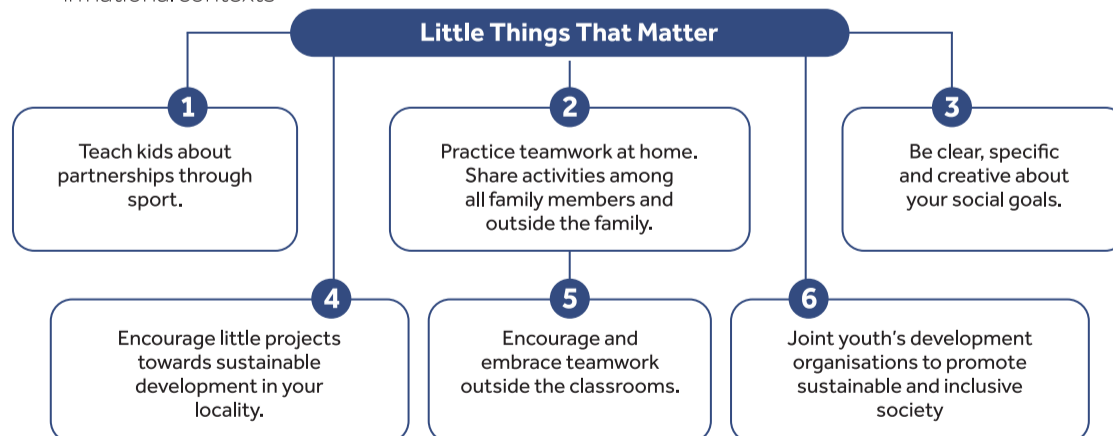
- 17.13 Enhance **global macroeconomic stability**, including through policy coordination and policy coherence
- 17.14 Enhance policy coherence for sustainable development
- 17.15 **Respect each country's policy space** and leadership to establish and implement policies for **poverty eradication and sustainable development**

MULTI-STAKEHOLDER PARTNERSHIPS

- 17.16 Enhance the global partnership for sustainable development, **complemented by multi-stakeholder partnerships that mobilize and share knowledge, expertise, technology and financial resources**, to support the achievement of the sustainable development goals in all countries, in particular developing countries
- 17.17 Encourage and promote effective **public, public-private and civil society partnerships**, building on the experience and resourcing strategies of partnerships

DATA, MONITORING AND ACCOUNTABILITY

- 17.18 By 2020, enhance capacity-building support to developing countries, including for least developed countries and small island developing States, to **increase significantly the availability of high-quality, timely and reliable data disaggregated** by income, gender, age, race, ethnicity, migratory status, disability, geographic location and other characteristics relevant in national contexts
- 17.19 By 2030, build on existing initiatives to **develop measurements of progress on sustainable development that complement gross domestic product**, and support statistical capacity-building in developing countries





17



PARTNERSHIPS FOR THE GOALS

Effective partnerships between governments, the private sector and civil society are needed for a successful sustainable development programme. These inclusive partnerships, built on principles and values, a common vision and common objectives that place people and the planet at the heart of what we do, are needed globally, regionally, nationally and locally.

1 - WHAT IS THE UN?

- A The University of Nottingham
- B The United Nations
- C The Urban Network

2 - WHO CAN WORK TO ACHIEVE THE 17 SDGs?

- A The public
- B Governments
- C Companies
- D Non-governmental organizations
- E All the above

3 - OF THE FOLLOWING PROPOSALS, WHICH COULD HELP FINANCE SUSTAINABLE DEVELOPMENT AND POVERTY REDUCTION?

- A Fighting corruption
- B Fighting tax evasion in tax havens
- C Fighting the appropriation of natural resources and lands
- D All the above

4 - THE GLOBAL POPULATION IS CURRENTLY 7.5 BILLION PEOPLE. HOW MANY WILL IT BE IN 2050?

- A 6 billion
- B 7.5 billion
- C 9 billion

5 - WHAT IS DEVELOPMENT ASSISTANCE?

- A Financial assistance from the richest to the poorest countries
- B Support for IT developers
- C Support for vocational training

6 - THE EARTH SUMMIT, HELD IN RIO IN 1992, SET THREE SUSTAINABLE DEVELOPMENT PILLARS, NAMELY:

- A Financial power, regulation of global trade, and control of the media
- B Education, agriculture and health
- C Economic progress, social well-being and environmental protection

7 - WHAT AMOUNT IS DIVERTED EACH YEAR FROM THE DEVELOPING COUNTRIES TO THE COUNTRIES OF THE NORTH?

- A EUR 125 billion
- B EUR 500 billion
- C EUR 800 billion

8 - SINCE 2009, THE NUMBER OF WEB USERS IN THE DEVELOPING COUNTRIES HAS:

- A Fallen
- B Stagnated
- C More than doubled

9 - IN THE WORLD, NEARLY:

- A 2 billion people use the Internet and one-third of them live in the developing countries
- B 3 billion people use the Internet and one-half of them live in the developing countries
- C 4 billion people use the Internet and two-thirds of them live in the developing countries

10 - TRUE OR FALSE? INFORMATION AND COMMUNICATION TECHNOLOGIES (ICT) ARE BENEFICIAL TO DEVELOPMENT.

- A True
- B False



Anwers



1 END POVERTY IN ALL ITS FORMS EVERYWHERE

DID YOU KNOW?

1 - THE WORLD BANK INTERNATIONAL THRESHOLD FOR EXTREME POVERTY IS:

B 1.90 dollars a day

If a person earns less than this then their standard of living is unsustainable and they are considered to be "extremely poor". Set in 2005 at 1.25 dollars a day, this threshold was raised in 2015 to 1.90 dollars to take increases in the cost of living into account.

2 - 4 IN 10 PEOPLE WERE LIVING IN EXTREME POVERTY IN 1990. HOW MANY PEOPLE NOW LIVE BELOW THIS THRESHOLD?

A 1 in 10

10.7% of the world's population currently lives on less than 1.90 dollars a day, as opposed to 42.2% 30 years ago, or around 800 million people. (population of Europe = 750 million people)

3 - MOST PEOPLE LIVING IN EXTREME POVERTY LIVE IN:

C Sub-Saharan Africa

Three regions are home to most of the world's extreme poverty: Latin America 5.6%, South Asia 13.5% and Sub-Saharan Africa 35.2%.

4 - HOW MANY PEOPLE IN THE WORLD ARE HOMELESS OR LIVE IN INADEQUATE HOUSING?

C 1 in 7

Or almost one billion people around the world. 30% of the population in developing countries lives in informal, dilapidated housing or shanty towns (without water, electricity, heating, etc.). The number of homeless people in Western Europe has reached a 50-year high with levels unheard of since the end of the Second World War.

5 - HOW MANY PEOPLE ARE LIVING IN POVERTY OR SOCIAL EXCLUSION IN THE EUROPEAN UNION?

C 119 million (or 23.7% of the European population)

The poverty level of 1.90 dollars a day is not relevant to the European Union and so poverty is calculated on the basis of median income. Households living on less than 60% of the median income are considered poor. In 2015, in the European Union, 118.8 million people were living in households considered to be suffering from poverty or social exclusion.

6 - WHO OR WHAT IS THE LARGEST GLOBAL EMPLOYER?

B Family agriculture

Family agriculture employs 40% of the world's active population, mostly in countries of the South, and accounts for 2.6 billion people producing 70% of the world's food. Family agriculture is defined particularly as farming that involves family members and the produce of which is consumed at least in part by the family itself.

7 - DURING A NATURAL DISASTER, WHOSE WELL-BEING SUFFERS THE MOST?

B The poor

While the poorest suffer few material losses, they are heavily affected by losses to their well-being. In fact, they have more difficulty in recovering and sometimes have to sacrifice their health or their education to survive. Moreover, living in poor housing, in high flood risk areas or in shanty towns, they are disproportionately exposed to "smaller" but more frequent disasters. 26 million people drop below the extreme poverty threshold each year due to natural disasters.

8 - 82% OF THE WEALTH CREATED WORLDWIDE IN 2017 BENEFITED THE RICHEST 1%. WHAT ABOUT THE POOREST 50%?

A They got nothing

In 12 months, the wealth of the richest 1% has increased by 762 billion dollars, or more than seven times the amount that would put an end to extreme poverty in the world. According to Oxfam, 62 people own as much as the poorest 50% of the world's population; this figure was 388 five years ago. This illustrates the spectacular increase in inequality in the world.

9 - BETWEEN 1975 AND 2004, OF 1,556 NEW MEDICATIONS CREATED, HOW MANY WERE INTENDED TO TREAT ILLNESSES ONLY FOUND IN DEVELOPING COUNTRIES?

A 21

Very little pharmaceutical research is being undertaken to develop medications aimed at treating diseases not existing in high-income countries. Between 1975 and 2004, only 21 of the 1,556 new medications, or 1.3%, came under this category.

10 - HOW CAN ACCESS TO INFORMATION HELP PEOPLE ESCAPE POVERTY?

D All the above

The spectacular increase in Internet access and mobile phones in developing countries has widely facilitated exchanges and communications, making useful information easily accessible. Through investment in communications and production infrastructure (raw materials to produce phones, batteries, etc.), this contributes to economic growth, development and poverty reduction.



ZERO HUNGER

DID YOU KNOW?

1 - HOW MANY OF THE WORLD'S PEOPLE ARE HUNGRY?

B 1 in 10

815 million people suffer from hunger, or 11% of the world's population. The vast majority of hungry people live in developing countries.

2 - TRUE OR FALSE? THE NUMBER OF HUNGRY PEOPLE IN THE WORLD HAS FALLEN SINCE 1990:

A True

11% of the world's population currently has insufficient food, as opposed to 23.3% at the start of the 1990s. Emerging countries such as China and India have made enormous progress in feeding their populations over this period. However, natural disasters and war have meant that 38 million more people were going hungry in 2016 than in 2015.

3 - OF THE 815 MILLION PEOPLE AFFECTED BY HUNGER, HALF ARE:

B Peasant farmers

Nearly half of those suffering from hunger in the world live in small farming communities, surviving on small plots of land. They are particularly vulnerable to natural disasters such as drought or flooding.

4 - DO WE PRODUCE ENOUGH FOOD TO FEED THE WHOLE WORLD?

B Yes, but it is unequally distributed and not everyone has access

There is sufficient land, soil and water to feed the whole world but, while some lack food, a significant share of global food production is lost or wasted and the price of food means that not everyone has access.

5 - TO FEED THE WORLD IN 2050, FOOD PRODUCTION WILL NEED TO INCREASE BY:

C 70%

By 2050, the world population will have reached 9.1 billion, or 34% more than today. Most of this growth will take place in developing countries. In order to feed an ever increasing, ever more urban and ever richer population, food production will need to increase by 70%.

6 - HAS THE PRICE OF FOOD INCREASED SINCE THE 2000s?

B Yes, it has nearly doubled

In 2000, the index measuring the variation in food prices was 91.1; by 2017 it had increased to 174.6. Some examples of price changes:
- Sugar: 120 euros/tonne in January 2000 and 420 euros/tonne in January 2017
- Wheat: 104 euros/tonne in January 2000 and 144 euros/tonne in January 2017
- Beef: 1,910 euros/tonne in January 2000 and 3,680 euros/tonne in January 2017

7 - HOW MUCH FOOD IS WASTED IN THE WORLD (PER SECOND)?

C 41 tonnes

Food wastage in the world is estimated at 1.3 billion tonnes a year, being 41 tonnes a second. In all, around a third of total food production intended for human consumption is wasted.

8 - WHAT IS FOOD INSECURITY?

A When you suffer or are at risk of suffering from hunger

Food security is guaranteed when all people have economic, social and physical access to sufficient and safe food that meets their nutritional needs and food preferences, enabling them to lead an active and healthy life.

9 - WHEN IS THE MOST CRITICAL AND DANGEROUS PERIOD FOR CHILD MALNUTRITION?

A Between -9 months (conception) and 24 months

The first two years of life are critical in preventing child malnutrition, which causes irreversible damage. Malnutrition among young children reduces physical and mental development during childhood. For example, delayed growth affects almost 147 million pre-school children in developing countries.

10 - FAMILY AGRICULTURE EMPLOYS:

B 42% of the world's active population

Breakdown of active population by sector: Agriculture 42%, Industry 21%, Services 37%
Breakdown of Gross Domestic Product (GDP) by sector: Agriculture 4%, Industry 32%, Services 64%



GOOD HEALTH AND WELL-BEING

DID YOU KNOW?

1 - WHAT IS AVERAGE LIFE EXPECTANCY IN THE WORLD?

C 71 years

This does, however, vary according to your place of birth. New-born babies in 29 countries, all high-income, now have an average life expectancy of at least 80 years, while in 22 other countries, all in Sub-Saharan Africa, it is under 60.

2 - WHY IS IT IMPORTANT TO PARTICIPATE IN SPORT EVERY DAY?

D All the above

The benefits of physical and sports activities on health have long been known and confirmed by all modern epidemiological studies!

3 - HOW MUCH PHYSICAL ACTIVITY DOES A CHILD AGED 5 TO 17 NEED EACH DAY?

B 1 hour

To improve cardiorespiratory endurance, muscular form and bone density, and to reduce the risk of non-transmissible diseases, it is recommended that children aged 5 to 17 participate in at least 60 minutes of moderate to sustained intensity physical activity every day.

4 - WHAT CONTINENT SUFFERS FROM 90% OF MALARIA CASES?

B Africa

Malaria is a potentially fatal but avoidable disease that can be cured. It is caused by parasites transmitted to humans through the bite of infected female mosquitoes.

5 - WHAT IS THE MAIN CAUSE OF MORTALITY IN THE WORLD?

A An unhealthy environment

12.6 million people died in 2012 due to living or working in an unhealthy environment - this was nearly a quarter of all deaths around the world. Environmental risk factors such as air, water and soil pollution, exposure to chemical substances, climate change or ultraviolet radiation, are contributory factors in more than 100 diseases or injuries.

6 - WHAT IS THE MAIN CAUSE OF CHILD MORTALITY IN DEVELOPING COUNTRIES?

B Malnutrition

56% of deaths among pre-school children in developing countries are the result of the underlying effects of malnutrition on an illness.

7 - OVERALL, IS CLIMATE CHANGE LIKELY TO HAVE A NEGATIVE OR POSITIVE IMPACT ON HEALTH?

B Negative: in most countries, climate change will negatively influence air and water quality, the amount of food and safety of housing.

Although global warming may offer some local advantages, such as a decline in winter mortality in temperate zones or an increase in food production in some areas, its effects overall are likely to be largely negative.

8 - WHO ARE MOST EXPOSED TO HEALTH RISKS DUE TO CLIMATE CHANGE? THOSE WHO LIVE:

F All the above

All populations will feel the effects of climate change but some are particularly vulnerable to health risks. Areas with no good health infrastructure, mostly in developing countries, will be less able to face up to this threat.

9 - TRUE OR FALSE? OBESITY NOW KILLS THREE TIMES MORE PEOPLE THAN MALNUTRITION.

A True

In 2010, obesity was responsible for 3.4 million deaths as opposed to 1 million due to malnutrition. High calorie food, one of the causes of obesity, is a growing factor in global mortality. In 2016, more than 1.9 billion adults were overweight. Of this total, more than 650 million were obese.

10 - JAPAN AND SIERRA LEONE ARE TWO EXTREMES OF WHICH WELL-BEING INDICATOR?

C Life expectancy: 84 years in Japan and 50 years in Sierra Leone, a 34-year difference

This difference is due in particular to unequal access to food and good quality medical care.

What can we do?

You can start by promoting and protecting your own health and the health of those around you, by making well-informed choices, practicing safe sex and vaccinating your children. You can raise awareness in your community about the importance of good health, healthy lifestyles as well as people's right to quality health care services, especially for the most vulnerable such as women and children. You can also hold your government, local leaders and other decision makers accountable to their commitments to improve people's access to health and health care.



ACCESS TO QUALITY EDUCATION



DID YOU KNOW?

1 - HOW MANY ADULTS ARE UNABLE TO READ AND WRITE AROUND THE WORLD?

A 2 in 10

781 million people over the age of 15 are unable to read and write around the world, or some 16% of the global population of this age group. In rich countries, nearly all people are able to read and write. 410 million of those unable to read and write are in South and West Asia, and 187 million in Sub-Saharan Africa. In these regions, the number of illiterate people has increased since 1999, from 156 to 187 million in Sub-Saharan Africa and from 390 to 410 million in South and West Asia.

2 - SINCE 2000, THE NUMBER OF STUDENTS ENROLLED IN HIGHER EDUCATION AROUND THE WORLD:

B Has doubled

The number of students enrolled in higher education more than doubled between 2000 and 2014, increasing from 100 to 207 million. Governments are failing to meet this growing demand and tackle disparities in access to education, leaving families paying part of the high cost of higher education when they do not always have the necessary financial resources.

3 - WHERE DO HALF OF ALL CHILDREN NOT ENROLLED IN SCHOOL LIVE?

D Sub-Saharan Africa

61.3 million children do not have access to primary school in the world. This situation remains worrying even though things are improving: they were 100 million in 2000. 32.5 million children not in school live in Sub-Saharan Africa, a high figure even though it declined by 9 million between 2000 and 2015 despite strong demographic pressure. There are also 18 million children still not in primary school in Asia, as opposed to 1.9 million in the developed world.

4 - HOW MANY CHILDREN IN DEVELOPING COUNTRIES GO TO SCHOOL ON AN EMPTY STOMACH?

C 66 million children (= population of France)

In the developing world, 66 million school-age children go to school on an empty stomach, 23 million in Africa alone.

5 - SINCE 1990, SCHOOL REGISTRATION OF YOUNG CHILDREN (3 TO 6 YEARS) HAS INCREASED BY:

C 30%

Over the last 25 years, school enrolment of young children has increased considerably, with more than 30% of the world's young children now in school; however, this figure has plateaued recently. Too many children in the world are still excluded from education: 9% of primary age children, or 58 million children not in school; 17% of school-age teenagers, or 63 million teenagers not in school.

6 - TRUE OR FALSE? ONE OF THE MAIN OBJECTIVES OF SDG 4 IS GUARANTEED FREE EDUCATION FOR ALL.

A True

94 out of 107 low or middle income countries around the world have already legalized free lower secondary school education. Only a few countries continue to charge fees for this level, including Botswana, Guinea, Papua New Guinea, South Africa and Tanzania.

7 - ON AVERAGE, WHAT SHARE OF THE WORLD'S EDUCATION BUDGET IS DEVOTED TO EARLY YEARS?

A 2%

And yet studies show that investing in early years education pays significant economic dividends in the future. Children from poor households who are able to benefit from early learning in early life earn an average 25% more as adults than those who have not.

8 - NOTIONS OF EQUALITY AND JUSTICE FOR ALL SHOULD BEGIN IN:

A Primary school

The education code reminds us that transmitting values of gender equality starts in primary school. This public policy is a necessary condition to ensure that stereotypes are gradually erased and that other models of behaviour are constructed that avoid sex discrimination and violence. The aim is to establish a culture of equality and mutual respect.

9 - HOW MANY CHILDREN AND YOUNG PEOPLE IN THE WORLD SUFFER VIOLENCE OR HARASSMENT AT SCHOOL?

C 1 in 15 children

It is estimated that 246 million children and teenagers around the world suffer violence and harassment of one form or another at school each year.

10 - WHAT PROPORTION OF CHILDREN IN THE WORLD ARE FORCED TO WORK?

C 11%

Or 168 million children around the world deprived of their childhood because they have to work, 115 million of them involved in dangerous activities.



GENDER EQUALITY

DID YOU KNOW?

1 - WHAT PROPORTION OF PARLIAMENTARIANS AROUND THE WORLD ARE WOMEN?

B 23%

Women make up 40% or more of parliamentarians in only 11 countries around the world. Women's political participation is hindered by the significant time they have to devote to family responsibilities, less developed networks and poorer access to funding during campaigns.

2 - OF THE 815 MILLION PEOPLE UNABLE TO READ OR WRITE IN THE WORLD, HOW MANY ARE WOMEN?

C Two-thirds

Women account for 63% of illiterate adults and this disparity is almost as wide among young people. Young girls make up 59% of the 115 million young people unable to read or write. Despite constant progress, women thus remain the main group most deprived of the general skills of a basic education, generation after generation.

3 - ONLY TWO COUNTRIES IN THE WORLD HAVE MORE WOMEN IN PARLIAMENT THAN MEN. WHICH?

- D** Rwanda
- E** Bolivia

Following the genocide in Rwanda, women became a majority in the country and a system aimed at parity within the State was established. 61% of Rwandan parliamentary seats are held by women. In Bolivia, a quotas system within representative bodies has enabled parity to be achieved, with 53% of those elected to parliament being women.

4 - WHICH COUNTRY WAS THE FIRST IN THE WORLD TO GIVE WOMEN THE RIGHT TO VOTE AND STAND FOR ELECTION?

C Finland

In 1906, Finland was the first country in the world to simultaneously grant all Finnish women the right to vote and to stand for election without restriction. In 1788, women in the United States gained the right to stand for election. However, the right to vote was not granted until 1920.

5 - HOW MANY COUNTRIES IN THE WORLD HAVE A FEMALE PRESIDENT OR PRIME MINISTER?

B 16

In 2006, only 9 countries had a female president or prime minister at their head. There are now 16 in this position, or 8.3%. Women's progress in this regard has been very slow over the last two years and, at this rate, it will be another 50 years before parity is achieved.

6 - WHICH OF THESE STATEMENTS IS TRUE:

- A** For equal work, men earn 20% more than women
- B** Throughout the world, on average, women work four years more than men

The median annual salary is EUR 19,570 for men, as opposed to EUR 16,310 for women. Women work four years more than men over the course of their lives. This involves, in particular, responsibility for housework, on which they spend an average of more than three and a half hours per day (as opposed to one hour for men) but also providing care for children and the sick and elderly.

7 - WHAT PERCENTAGE OF RESEARCHERS ARE WOMEN?

A 29%

The stereotypes facing young girls, the family responsibilities and prejudices confronting them when choosing a career, all play a strong role in this situation.

8 - WHICH THREE COUNTRIES WERE NOTABLE FOR THEIR IMPROVED GENDER EQUALITY IN 2017?

B Rwanda, Nicaragua and Slovenia

Only seven countries in the world have eliminated 80% of inequalities with, in particular, Rwanda, Nicaragua and Slovenia having carved themselves a place alongside the Nordic countries of Iceland, Norway, Finland and Sweden. Western Europe remains the most competitive region overall but even the best students can lapse sometimes. Eleven of the 20 countries of Western Europe slipped backwards this year, with the following Mediterranean countries at the bottom of the list: Greece, Italy, Cyprus and Malta.

9 - IF 75% OF MEN ARE ACTIVE (IN WORK OR ACTIVELY SEEKING IT) AROUND THE WORLD, WHAT IS THE EQUIVALENT PROPORTION OF ACTIVE WOMEN?

B 48.5%

Or a difference of over 25% between the average activity rates of women and men. Women in emerging countries are particularly affected. In these countries, the gap in activity rate between men and women is 31%. In the developed world this reduces to 16% and in developing countries 12%. This gap is due in particular to the fact that many women have domestic duties that are not declared: these are the invisible workers.

10 - ACCORDING TO THE WORLD ECONOMIC FORUM, GENDER INEQUALITIES AT WORK WILL NOT DISAPPEAR UNTIL:

C 2234

This study is more pessimistic than it was the previous year, when it gave a period of 170 years for achieving this objective.



CLEAN WATER AND SANITATION

DID YOU KNOW??

1 - WHICH OF THE FOLLOWING IS THE MOST DANGEROUS TO HUMANS?

- C** Dirty drinking water

Some 2.6 million people around the world die each year for lack of clean water and nearly half of the world's population drink water that is harmful to their health. This is due largely to a lack of sanitation infrastructure. Two billion people have to use water contaminated by sewage and which is therefore dangerous for their health. On top of this, mosquitoes are the most dangerous animal to humans and kill an average of 750,000 people each year, as opposed to only 10 killed by sharks.

2 - HOW MUCH WATER IS NECESSARY TO SURVIVE?

- B** 8 to 15 litres a day

This includes the water necessary for 3 vital things:
- survival (food and drink: 2.5 to 3 L/day)
- basic hygiene: 2 to 6 L/day
- basic cooking: 3 to 6 L/day

3 - HOW MUCH OF THE WORLD'S WATER IS FRESH?

- A** Less than 3%

Our blue planet is, above all, a salt water planet. All the freshwater together accounts for only 2.8% of the global volume. Of this low percentage, glaciers and perma ice account for 2.1% and available freshwater 0.7%. In all, humankind is able to use less than 1% of the total volume of freshwater on Earth. This includes water courses, natural and artificial reservoirs (lakes, dams...) and shallow groundwater tables. Fresh water is a resource that has to be preserved and this is why we have to do everything possible to avoid wasting it.

4 - TO SAVE WATER ON A DAILY BASIS, IT IS BEST TO:

- B** Take short showers rather than baths

Taking a bath uses an average of 200 litres of water as opposed to 50 for a shower. A modern dishwasher uses 12 litres of water as opposed to 40 litres if you do the washing up by hand. And it takes 2.5 litres of water to make 1 litre of fizzy drink.

5 - WHERE DOES 90% OF WASTEWATER FROM HUMAN ACTIVITY GO?

- C** It is discharged back into the rivers and seas without being treated

2 billion litres of wastewater used by humankind are discharged each day into the rivers and seas, or more than 23,000 litres per second. Each year, 730 billion litres of wastewater is discharged into nature because of leaks, a lack of treatment plants, etc.

6 - HOW MANY PEOPLE IN THE WORLD DO NOT HAVE ACCESS TO CLEAN AND SANITARY TOILETS?

- C** 1 in 3 people

Across the world, 2.4 billion people live without adequate sanitation. Nearly 700 million still have no access to a source of clean drinking water protected from different sources of pollution. Women and young girls waste many hours collecting drinking water, to the detriment of their productive work or their education. For children in school, 443 million school days are wasted through water-borne diseases.

7 - WHAT IS HYDROELECTRIC POWER?

- A** Electricity produced using the energy of rivers, streams and lakes

Hydropower is the second largest source of electricity after nuclear and the number one source of renewable energy in France. Across the world, it is the third largest source of production, providing 16% of the world's electricity, behind coal (41%) and gas (21%).

8 - WHAT IS HYDRIC STRESS?

- A** Insufficient resources to meet our water needs

Hydric stress – or insufficient water to meet the different human activities and environmental needs – begins when the availability of water is less than 1,700 m³ per person per year. Nearly three-quarters of inhabitants in Arab countries live below the established threshold for water scarcity, set at 1,000 m³ per year, and nearly half live in a situation of extreme scarcity, with less than 500 m³, in Egypt and Libya in particular.

9 - THE UN INTERNATIONAL DECADE ON CLEAN WATER AND SANITATION ENABLED, AMONG OTHER THINGS:

- C** 1.3 billion people to have access to clean water

The United Nations proclaimed the International Decade for Action "Water for Life" in 2005, and it ran until 2015. Governments undertook to halve the percentage of people with no access to a safe drinking water supply.

10 - WHAT IS THE MAIN USE OF THE WATER THAT IS TAKEN FROM LAKES, RIVERS AND AQUIFERS?

- B** For crop irrigation

The agricultural sector alone is the largest consumer of freshwater. 70% of water drawn throughout the world is used for irrigation.



AFFORDABLE AND CLEAN ENERGY

DID YOU KNOW?

1 - HUMANKIND GENERATES BETWEEN:

- C** 80 to 130 tonnes of waste per second

It is difficult to estimate but this figure varies between 3,400 and 4,000 billion tonnes per year, or 80 to 126 tonnes of waste generated per second! Each day, human activity produces more than 10 billion kilos of waste.

2 - CAN WASTE BE TRANSFORMED INTO ENERGY?

- A** Yes

Energy recovery from waste is a part of the development of renewable energies. Incineration and methanization are the engines of waste recovery in France and Europe.

3 - CLEAN ENERGY CANNOT BE PRODUCED WITH WHICH OF THE FOLLOWING:

- A** Nuclear
C Oil
F Coal

Clean, or green, energy is a source of energy that produces only small quantities of pollutants in relation to other more widespread and polluting energy sources. These three sources emit waste or gases that affect the ozone layer and many other ecosystems when they are transformed.

4 - SOME ENERGY IS CONSIDERED RENEWABLE. WHY?

- C** Because it can be rapidly replenished by nature

Energy is renewable when it comes from sources that are constantly replenished by nature. Renewable energies come from two major natural sources: the Sun (at the origin of the water cycle, tides, wind and plant growth) and the Earth (which gives off heat). The term renewable energy is often likened to clean energy. Clean energy produces few or no pollutants or pollutants that soon disappear without consequences for the environment. But renewable energy is not necessarily clean, and vice versa (e.g. biomass production).

5 - WHICH IS THE MOST USED RENEWABLE ENERGY IN THE WORLD?

- B** Hydropower

Hydropower accounts for 19% of total global electricity production, and 13% in France. It is the most used source of renewable energy, and the hydroelectric potential in the world has not yet been fully exploited. Solar energy accounts for 3% of global renewable energy production. Wind power is estimated at 4% of global electricity production.

6 - WHAT DOES ENERGY EFFICIENCY MEAN?

- C** When a device or building uses relatively little energy to run

Energy efficiency is when energy consumption within a system is minimized in relation to an identical service.

7 - HOW MANY PEOPLE DO NOT HAVE ACCESS TO ELECTRICITY IN THE WORLD?

- B** 1.3 billion (or the population of China)

One person in seven has no access to electricity in the world. 62% of those deprived of access to electricity live in Sub-Saharan Africa.

8 - THERE ARE NUMEROUS GREENHOUSE GASES. WHICH OF THE FOLLOWING IS NOT ONE OF THEM?

- B** Oxygen

Greenhouse gases enter our atmosphere in two ways. The first is due to natural processes such as animal and plant respiration. The other is due to human activity. The main anthropic (human) causes of greenhouse gas emissions are: the use of fossil fuels, deforestation, intensive livestock farming, the use of synthetic fertilizers and industrial processes.

9 - IN 2015, WHICH COUNTRY INVESTED THE MOST IN RENEWABLE ENERGIES?

- C** China, with 36% of global investment in renewable energies

Global investment in renewable energies reached a record 286 billion dollars in 2015. For the first time, investment in emerging and developing countries surpassed that of the developed world (156 billion as opposed to 130 billion). China alone invested 103 billion dollars, or 36% of the world total.

10 - HOW CAN WASTE BE TRANSFORMED?

- A** Composting
B Methanization
C Recycling

Waste recovery is a set of processes by which material or organic waste is transformed for a specific use such as recycling, composting or even transformation into energy: in this latter case, we talk of energy recovery.



8



DECENT WORK AND ECONOMIC GROWTH

DID YOU KNOW?

1 - WHAT DOES SUSTAINABLE ECONOMIC GROWTH SEEK TO PRESERVE?

- B** The environment

To achieve sustainable economic growth, societies need to create the conditions that will guarantee people quality jobs that stimulate the economy without any harmful environmental effects. Job opportunities also need to be offered to all people of working age and everyone should enjoy decent working conditions.

2 - THE TERM “DECENT WORK” INVOLVES SEVERAL CRITERIA. WHAT ARE THESE?

- B** Safety at work
C Social protection for families
E Appropriate remuneration

Decent work is work that offers dignity to the person doing it, i.e. due respect but also a balanced family life. It includes access to productive and appropriately paid work, safety at work and social protection for families, better personal development prospects and social integration, equal opportunities and treatment for all, etc.

3 - HOW MANY UNEMPLOYED PEOPLE ARE THERE IN THE WORLD?

- B** 200 million (or 3% of the world's population)

This equates to one person in 40 globally. There are great disparities between countries: the country with the highest unemployment rate is the Congo with 45.4%, and the lowest is Qatar with 0.10%.

4 - 168 MILLION CHILDREN AGED 5 TO 17 WORK AROUND THE WORLD. WHAT PROPORTION OF THESE WORK IN AGRICULTURE?

- C** 60%

11% of all children aged 5 to 17 years are deprived of their childhood due to work. While the majority work in the agricultural sector (59%), the worst forms of child labour include their use as slaves, in prostitution, selling drugs, in crime, recruitment as soldiers and other dangerous work.

5 - TRUE OR FALSE? INTERNATIONAL MIGRANTS HAVE A POSITIVE IMPACT ON THE GLOBAL ECONOMY.

- A** True

Financial remittances actually represent a more significant financial flow than development assistance! The total number of international migrants was 250 million in 2015. These migrants sent a total of 601 billion dollars back to their families in their places of origin, of which 441 billion went to developing countries. By transferring sums three times higher than that sent by international development assistance, migrants are thus providing decisive support for millions of households.

6 - HOW MANY JOBS NEED TO BE CREATED EACH YEAR TO KEEP UP WITH THE GROWTH IN THE WORLD'S ACTIVE POPULATION?

- B** 30 million

470 million jobs will be needed in the world for new job market entrants between 2016 and 2030, simply to keep up with the growth in the world's working age population.

7 - WHAT IS THE LINK BETWEEN EMPLOYMENT AND CLIMATE CHANGE?

- C** Both the above are true

Climate change is not only a threat but also an opportunity as numerous jobs will need to be created in the energy economy, renewable energies, agriculture, etc.

8 - ONE WORKER DIES FROM A WORK-RELATED ACCIDENT OR DISEASE EVERY 15 SECONDS. WHAT IS THE MAIN CAUSE OF THESE DEATHS?

- B** Occupational disease

In 2000, the number of work-related deaths stood at 2 million. It is now 2.8 million. For more than half of these workers, their death was related to an occupational disease. The most significant of these is cancer. This is due in particular to exposure to certain toxic substances.

9 - THE GLOBAL RATE OF EMPLOYMENT FOR DISABLED PEOPLE IS:

- B** Lower than that of able-bodied people

The employment rate the world over is lower for disabled men (53%) and women (20%) than for their able-bodied counterparts (65% and 30% respectively).

10 - OF THE 197 COUNTRIES RECOGNIZED BY THE UN, HOW MANY HAVE ANTI-DISCRIMINATION LEGISLATION OR LEGISLATION THAT SPECIFICALLY REFERENCES THE DISABLED?

- A** 45 countries

In fact, while disabled people's rights are already guaranteed in existing human rights treaties, the different mechanisms and provisions put in place do not always ensure the defence, support or best and most appropriate protection for these people.



INNOVATION AND INFRASTRUCTURE

DID YOU KNOW?

1 - WHICH IS THE "GREENEST" CITY IN THE WORLD?

- A** Reykjavik (Iceland)

In 2016, it was named the "greenest" city in the world. The Icelandic capital is now powered entirely by clean energy based on geothermal and hydroelectricity. Its transport system even runs solely on hydrogen engines!

2 - TRUE OR FALSE? TRADITIONAL IRRIGATION IS MORE ECONOMICAL AND RESPONSIBLE THAN DRIP FEED SYSTEMS.

- B** False

Of the different irrigation systems, the most economical and ecological is undoubtedly drip irrigation. It is specific and gives just the right amount of water to plants directly into the roots. It is simple and economical to install. It enables water consumption to be reduced by up to 70% compared to traditional spray irrigation.

3 - WHICH OF THESE INVENTIONS IS BEST AT COMBATTING CLIMATE CHANGE?

- D** The bicycle

A bike emits no greenhouse gases, which are responsible for climate change. If you live 5 km from your place of work, then changing from a car to a bike would reduce CO₂ emissions by 650 kg per year.

4 - WHAT SHARE OF THE POPULATION IN DEVELOPING COUNTRIES HAS NO INTERNET ACCESS?

- A** 95%

43% of the global population has access to the Internet. However, this hides a huge disparity: 78% of households in developed countries have access to the Internet as opposed to 31% in the developing world and 5% in the least advanced countries, where the digital gap has actually widened in the last 10 years.

5 - TRUE OR FALSE? BETWEEN 1 AND 1.5 BILLION PEOPLE TODAY HAVE NO ACCESS TO RELIABLE TELECOMMUNICATIONS SERVICES.

- A** True

Around 2.6 billion people around the world have problems in accessing a constant electricity supply and 1 to 1.5 billion have no access to a reliable phone service.

6 - WHAT CHARACTERIZES A SUSTAINABLE COMPANY?

- A** It operates on a logic of sustainable development
C It is fully respectful of the environment

A sustainable company takes into account the impacts of its activity on the surrounding society and makes commitments regarding the well-being of the population that lives in its direct environment.

7 - BY 2030, THE RENEWABLE ENERGIES SECTOR COULD HAVE CREATED:

- C** 20 million jobs

The number of people employed in the renewable energies sector is currently around 2.3 million. Due to growing interest in alternative energies, the total number of jobs in renewable energies could reach 20 million by 2030.

8 - WHAT IS ECO-DESIGN?

- B** Design that includes the environment from the very start of a project or product

Eco-design consists of taking environmental impacts into account from the very start of a product or service and throughout all stages of its life cycle.

9 - FIND THE ODD ONES OUT. WHICH OF THE FOLLOWING IS NOT THE PURPOSE OF INTEGRATING ECO-DESIGN INTO A PROJECT?

- B** To reduce the company's profits

Eco-design seeks a fair compromise between the environment and all other constraints linked to product design. It therefore includes environmental considerations alongside technical viability, cost control and deadlines, marketing and performance.

10 - IN LOW-INCOME COUNTRIES, INFRASTRUCTURE CONSTRAINTS AFFECT COMPANY PRODUCTIVITY:

- B** By nearly 40%

Inappropriate infrastructure leads to difficulties in accessing markets, jobs, information and training, which are major barriers to commercial activities. For numerous African countries, in particular low-income countries, existing infrastructure constraints affect company productivity by almost 40%.



10



REDUCED INEQUALITIES

DID YOU KNOW?

1 - INCOME INEQUALITY:

- C** Reduces economic growth and increases poverty

Beyond a certain threshold, income inequality is harmful to economic growth and poverty reduction. Growing income inequality is not inevitable. Several countries have managed to control and even reduce it while still obtaining good growth results.

2 - TRUE OR FALSE? 75% OF THE POPULATION LIVE IN SOCIETIES WHERE INCOMES ARE MORE UNEQUALLY DISTRIBUTED THAN IN THE 1990s.

- A** True

The vast majority of households, particularly in the developing countries, today live in societies where incomes are distributed more unequally than in the 1990s.

3 - IF EVERYONE ON EARTH LIVED LIKE THE FRENCH, HOW MANY PLANET EARTHS WOULD BE NEEDED TO MEET THEIR NEEDS?

- B** 3 planets

The world's environmental footprint, which measures our consumption of the goods and services generated by nature, indicates that the world currently consumes the equivalent of 1.6 planets.

4 - HOW MANY OF THE POOREST PEOPLE IN THE WORLD BENEFIT FROM SOCIAL PROTECTION?

- C** One-third

Rates of coverage are falling even lower in South Asia and Sub-Saharan Africa, regions that are home to the highest rate of extreme poverty. Without social protection, many poor and vulnerable people struggle to lift themselves out of the poverty trap, in which hunger, disease and a lack of education perpetuate the misery for future generations.

5 - GLOBALIZATION OF TRADE AND PRODUCTION MEANS THAT INEQUALITIES BETWEEN DEVELOPED AND DEVELOPING COUNTRIES WILL:

- B** Increase as the profits will be concentrated in developed countries

Even though companies in the developed world are relocating part of their production to developing countries, they are tending to repatriate their profits back home.

6 - AFRICA PRODUCES 75% OF THE WORLD'S COCOA. WHAT PROPORTION OF THE INCOME DOES IT RECEIVE FROM THE MANUFACTURE OF CHOCOLATE?

- A** 2%

98% of income from the sale of cocoa is distributed between the middlemen and the cocoa processing industries.

7 - A TRIP FROM PARIS TO LONDON COSTS AROUND EUR 150. HOW MUCH DOES THE SAME TRIP COST FOR A MIGRANT?

- C** EUR 10,000

The people smugglers charge different prices, resulting in very different crossing conditions. For EUR 10,000, migrants reach Calais with the help of smugglers and are put up in hotels or camps with suitable living conditions. This also covers their cost of getting to England.

8 - TO WHAT EXTENT DID INEQUALITY OF INCOME BETWEEN RICHEST AND POOREST INCREASE IN DEVELOPING COUNTRIES BETWEEN 1990 AND 2010?

- A** 11%

The increase in unstable employment, technical progress that favours skilled workers and the weakening of redistributive systems are all factors responsible for this increased inequality. The situation was, however, clearly improving between 1970 and 1990 before reversing.

9 - WOMEN IN URBAN AREAS ARE:

- B** Three times less likely to die during childbirth than those living in rural areas

In rural areas, women live very far from health centres and have less access to specialist services and equipment. The distance and lack of infrastructure and human resources in part explains the higher risks of complication during childbirth in rural areas.

10 - WHAT PROPORTION OF DOMESTIC WORKERS AROUND THE WORLD ARE WOMEN?

- C** 83%

Most are undeclared and therefore unable to receive the minimum wage. Their work consists largely of cleaning the house, cooking, washing and ironing, looking after the children, taking care of the sick, acting as gardeners and drivers for the family, and even looking after the pets.



CITIES AND COMMUNITIES

DID YOU KNOW?

1 - IN RELATION TO A 10 KM JOURNEY IN TOWN, PUT THE FOLLOWING MEANS OF TRANSPORT INTO ORDER FROM LEAST POLLUTING TO MOST.

- A** 1. Bike / 2. Tram / 3. Underground / 4. Bus / 5. Motorbike / 6. Car

20% of greenhouse gas emissions are now due to transport.

2 - IN 1990, 10 CITIES IN THE WORLD HAD MORE THAN 10 MILLION INHABITANTS. BY 2018 THERE WERE:

- C** 47

In all, these cities are home to 754 million people. First place goes to Tokyo with more than 40 million inhabitants.

3 - 95% OF URBAN EXPANSION WILL TAKE PLACE IN:

- B** Developing countries

The urban population will increase even more rapidly in developing countries, where there is a booming rural exodus towards the megacities.

4 - WHAT PROPORTION OF THE WORLD'S POPULATION CURRENTLY LIVES IN URBAN AREAS?

- C** 3 billion, or 35% of the world's population

According to UN projections, 66% of the population will live in cities by 2050. The combined effect of growing urbanization and demographic growth will contribute a further 2.5 million people to cities, of which 37% in India, followed by China and Nigeria.

5 - CITIES COVER 3% OF THE EARTH'S LAND MASS BUT PRODUCE WHAT PROPORTION OF GLOBAL CARBON DIOXIDE EMISSIONS?

- C** 70% of carbon dioxide emissions

Cities produce more than 70% of carbon dioxide emissions and consume between 60% and 80% of world energy. These emissions are primarily due to road, water and air transport, industry and waste management.

6 - HOW MANY PEOPLE LIVE IN SHANTY TOWNS AROUND THE WORLD?

- B** 900 million, or 1 in 8 people

The three regions with the most people living in shanty towns are Sub-Saharan Africa with 199.5 million, South Asia with 190.7 million and East Asia with 189.6 million people. Shanty towns are a clear manifestation of a poorly-planned and managed urban sector, and particularly a poorly-functioning housing sector.

7 - BY 2030, IF NOTHING IS DONE, HOW MANY PEOPLE WILL BE LIVING IN SHANTY TOWNS?

- C** 3 billion, or 1 in 5 people

Rapid urbanization places significant pressures on housing and serviced land. By 2030, around 3 billion people will require adequate housing and access to infrastructure and basic services, as well as water and sanitation systems.

8 - FIND THE ODD ONE OUT. RAPID URBANIZATION PUTS PRESSURE ON:

- B** Economic growth

Urbanization creates jobs, new economic flows and tourism. It does, however, raise environmental issues due to the pressure exerted on natural resources (water, forest...), the decreasing agricultural space and greater production of waste and toxic gases.

9 - A "RESILIENT" TOWN IS...

- B** A town capable of resisting and adapting to the changes it undergoes

A resilient town offers a new and innovative urban dynamic with which to face up to natural risks and social and economic mutations.

10 - WHAT IS URBAN AND PERIURBAN HORTICULTURE?

- A** Growing plants and raising animals in and around towns

Horticulture provides different kinds of food (cereals, root vegetables, green vegetables, mushrooms, fruit), and non-food products (aromatic and medicinal herbs, ornamental plants, etc.). The popularity of produce from local agribusiness is in part linked to the lesser environmental impact of short distribution chains, and in particular a more favourable carbon foot print due to the shorter distance travelled by these products.



12



RESPONSIBLE CONSUMPTION AND PRODUCTION

DID YOU KNOW?

1 - WHAT PROPORTION OF THE WORLD'S FOOD IS WASTED OR THROWN AWAY?

B One-third of all food produced

Wastage is a chronic problem across the world. One-third of the food produced for human consumption ends up lost or wasted, i.e. 1.3 billion tonnes per year. The proportion of food wasted has doubled since 1974.

2 - HOW MANY M³ OF WATER ARE USED UNNECESSARILY EACH YEAR IN THE PRODUCTION OF WASTED FOOD?

C 250 km³

This represents a volume of water three times greater than that of Lake Geneva or equivalent to the annual flow of the Volga, the longest river in Europe (in Russia) being used to produce food that is wasted or lost.

3 - OVERCONSUMPTION OF FOOD IS HARMFUL TO:

E All the above

Each year, 1.3 billion tonnes of food is wasted, while 815 million people go hungry around the world. Overconsumption of food is harmful to both our health and the environment. Two billion people in the world are overweight or obese.

4 - BY WHAT DATE IN 2017 HAD HUMANKIND CONSUMED MORE NATURAL RESOURCES THAN THE PLANET WAS CAPABLE OF PRODUCING?

A 2 August

Or six days earlier than last year. Up to 1970, the amount of carbon emitted in a year was equivalent to the absorption capacity of the oceans and forests. Now, we would need the equivalent of 1.6 planets to meet our needs.

5 - IF THE ENTIRE WORLD POPULATION WERE TO USE ENERGY-EFFICIENT LIGHT BULBS, WE WOULD SAVE:

C 120 billion dollars a year

An energy-efficient light bulb uses less energy and lasts longer than an energy-saving light bulb.

6 - WHICH COUNTRY WAS THE FIRST TO BAN PLASTIC BAGS?

B Bangladesh

500 billion plastic bags are produced worldwide each year. Measures to ban or tax checkout bags – or single-use bags – have multiplied around the world. Denmark was a pioneer, bringing in a tax in 1994. In 2002, Bangladesh passed the first full ban on plastic bags, which were suspected of having caused serious flooding by preventing water drainage. That same year, Ireland imposed a 15 cent tax on checkout bags, resulting in a 90% decline in their use.

7 - IF POLLINATING INSECTS, SUCH AS BEES, WERE TO DISAPPEAR, HOW MUCH WOULD IT COST TO REPLICATE THEIR JOB?

C EUR 153 billion

Insect pollination is an ecosystemic service, meaning a service undertaken by nature, and important for global agricultural production. The service provided by pollinators has been costed at EUR 153 billion, or 9.5% of the total value of global food production.

8 - WHICH OF THE FOLLOWING SECTORS EMITS THE MOST GREENHOUSE GAS RESPONSIBLE FOR GLOBAL WARMING?

B Industry

According to the Intergovernmental Panel on Climate Change (IPCC), industry is the cause of 32% of greenhouse gas emissions, in pole position ahead of agriculture and forestry (25%) and construction (18.4%).

9 - WHAT IS AGROECOLOGY?

A Farming techniques that respect the environment

The aim of agroecology is to optimize food and farming production without endangering nature. Agroecology results in a more diversified agriculture adapted to the specific local features of the region.

10 - HOW MUCH WASTE ENDS UP IN THE SEA EVERY MINUTE AROUND THE WORLD?

C The equivalent of 1,600 shopping trolleys

Every year, 20 billion tonnes of waste is discharged into the oceans. Several large open dumps have been discovered drifting in the sea. These polluted areas are commonly known as the 7th plastic continent.



13



CLIMATE ACTION

DID YOU KNOW?

1 - WHAT ENVIRONMENTAL BEHAVIOUR HELPS PROTECT THE PLANET?

B Eating “ugly” fruit and vegetables

Mass distribution imposes certain sizes on fruit and vegetables. 40% of these products are rejected by supermarkets as being “too ugly” to be sold.

2 - TRUE OR FALSE? THE GREENHOUSE EFFECT IS DUE TO HUMANS:

B False, without the greenhouse effect life would not have been able to emerge and develop on Earth

The greenhouse effect is a perfectly natural phenomenon and is therefore not down to humans. It is even because of this that life was able to develop on Earth. It is a mechanism that means that a large proportion of the sun’s rays are trapped by the planet and thus warm it. For the Earth, gases known as “greenhouse gases” play this role.

3 – TRUE OR FALSE? WITHOUT GREENHOUSE GASES, THE TEMPERATURE WOULD BE -19°C:

A True

Gases capture the infrared rays bouncing off the Earth’s surface and prevent them from escaping. This greenhouse effect results in an increased temperature on the surface of our planet. It is estimated that without this atmospheric greenhouse effect, the average temperature on the Earth’s surface would be - 19 °C instead of the actual 15 °C.

4 - TRUE OR FALSE? HOLES IN THE OZONE LAYER ARE EXACERBATING CLIMATE CHANGE:

B False

Paradoxically, current climate change is contributing, to a small extent, to reducing the hole in the ozone layer. While greenhouse gases heat up the lower atmosphere, they make the very high altitude stratosphere colder, which may have a slightly positive effect by slowing down the chemical reactions that are destroying the ozone.

5 - WHAT PERCENTAGE OF GREENHOUSE GAS EMISSIONS ARE DUE TO AGRICULTURE?

B 24%

24% of all greenhouse gas emissions come from agriculture, 25% from electricity production and 32% from industry. The biggest producers of agricultural emissions are cattle.

6 - WITH EVERY ONE DEGREE INCREASE IN TEMPERATURE, GLOBAL CEREAL PRODUCTION DECLINES BY AROUND:

B 5%

Between 1880 and 2012, the average world temperature increased by 0.85 °C. Between 1981 and 2002, an average decline in world grain production of 30 million tonnes per year has been seen due to global warming.

7 - SINCE THE START OF THE 21ST CENTURY, HOW MANY YEARS HAVE BEEN CLASSIFIED AS THE HOTTEST ON RECORD?

C 16 years

Of the 17 years of the 21st century, all have known temperatures significantly above the average for the period 1961-1990. The 21st century includes 16 of the 17 hottest years on record, the only “intruder” being 1998.

8 - IN 2015, AT THE COP21 IN PARIS, HEADS OF STATE UNDERTOOK TO PUT MEASURES IN PLACE TO LIMIT GLOBAL WARMING TO...

B + 2 degrees Celsius by 2100

The Paris Agreement is the first universal agreement on climate. The main aim of the agreement is to contain the average temperature increase to below 2 degrees, and to endeavour to limit this increase to 1.5 degrees, in order to reduce the risks and impacts of the consequences of climate change.

9 - SINCE 1979, SEA ICE HAS DIMINISHED BY:

C 1 million km² each decade (or 100,000 football pitches)

The oceans are warming, snow and ice is melting and sea levels are rising. Between 1901 and 2010, average global sea levels rose by 19 cm as the oceans have increased in size due to warming and melting of the ice. Since 1979, 1.07 million km² of Arctic sea ice have been lost each decade.

10 - SINCE 1990, GLOBAL CARBON DIOXIDE (CO₂) EMISSIONS HAVE INCREASED BY ALMOST:

C 50%

This increase is primarily due to the following sectors: transport, agriculture, the energy industry and waste management.



14



LIFE BELOW WATER

DID YOU KNOW?

1 - ALONG WITH THE FORESTS, WHAT ARE KNOWN AS THE “LUNGS OF THE EARTH”?

B The oceans

The oceans, inhabited by phytoplankton, are the number one producer of O₂ and recycler of CO₂. One-half of all oxygen contained in the atmosphere comes from phytoplankton.

2 - TRUE OR FALSE? AT THE CURRENT RATE, THERE WILL BE MORE PLASTIC IN THE OCEANS THAN FISH BY 2050.

A True

More than 150 million tonnes of plastic waste is floating in the oceans and this could double by 2050. If no action is taken, this waste will weigh more than all the fish put together.

3 - SINCE 1950, THE SEA BIRD POPULATION HAS FALLEN BY:

B 70%

Between 1950 and 2010, 200 million sea birds disappeared, or 70% of their population. This disappearance is due primarily to the destruction of marine ecosystems, to which must be added entanglement in fishing gear, disappearance of prey, pollution, oil, destruction of their natural habitat, etc. In all cases, the common denominator is humankind.

4 - WHAT PERCENTAGE OF MARINE SPECIES HAVE WE IDENTIFIED?

A Around 5%

220,000 living species have currently been identified, 20% of which are marine species. And yet a census of life under the water conducted since 2000 has listed far more species than previously thought. Of the millions of specimens collected, the census found more than 6,000 potentially new species. This could logically be extrapolated to at least a million forms of underwater life listed as species and dozens or even hundreds of millions of kinds of microbes.

5 - THE DISAPPEARANCE OF MARINE SPECIES IS DUE TO:

D All the above

Humankind is overfishing our oceans and we are being forced to go ever deeper to find stocks. But the lower down the fish live, the more slowly they reproduce and the more fragile their ecosystem becomes. This ecosystem is also out of balance due to ocean warming, which is resulting in increased CO₂ levels in the water and thus raised acidity. And this is not to mention chemical pollution, oil, nuclear and other waste. All this combines to encourage the disappearance of marine species.

6 - WHAT PROPORTION OF COMMERCIAL FISHERIES ARE OVER OR FULLY EXPLOITED?

C 80%

If we catch more fish than we should, they will not have the time to reproduce or regenerate and this affects the ecosystem. Today, 7 of the 10 most significant species of fish are on the verge of total depopulation. 32% of stocks are being overexploited.

7 - WHAT IS SUSTAINABLE FISHING?

D All the above

Overfishing each year causes 50 billion in losses due to poor management and inefficiency. Stocks are thus being exhausted and the cost of seeking and capturing these fish is constantly rising. Sustainable fishing encourages a more environmental approach by limiting the volumes of fish caught in order to protect species and by banning certain techniques harmful to the ecosystem. It is estimated that this could yield 83 billion dollars a year.

8 - HOW MANY PEOPLE DEPEND ON MARINE BIODIVERSITY FOR THEIR LIVELIHOODS?

C More than 3 billion

This includes people employed in the medical sector, tourism, biofuels and agribusiness, in particular.

9 - WHAT PROPORTION OF GREENHOUSE GASES DO THE OCEANS ABSORB?

C 30%

The oceans exchange several billion tonnes of carbon with the atmosphere in the form of carbon dioxide (CO₂). This natural process enables a proportion of the greenhouse gas emissions to be stored. Without this absorption capacity, current climate change would be more rapid and more marked.

10 - FOR WHICH NGO DID THE ARTIST PENELOPE BAGIEU ILLUSTRATE THE PETITION “TAKE 5 MINUTES TO SIGN, MY FRIEND” DENOUNCING THE EVILS OF OVERFISHING?

C Bloom

Founded in 2004, Bloom is devoted to protecting the oceans and its inhabitants, and is working to obtain a sustainable pact between humankind and the sea. Its aims are to protect the oceans and marine species while maximizing sustainable employment in fisheries and fish farming.



LIFE ON LAND

DID YOU KNOW?

1 - HOW MANY HECTARES OF FOREST ARE DISAPPEARING EVERY YEAR?

- C** 13 million hectares (15 million football pitches)

The forests are home to 80% of terrestrial biodiversity and enable 1.6 billion people to meet their needs. However, 13 million hectares of forest are disappearing each year, particularly in tropical zones.

2 - WHAT IS THE MAIN REASON FOR FELLING TREES NOWADAYS?

- A** To increase farmland

The increase in the world's population is resulting in the disappearance of primary forest, such as in the Amazon for example, to the benefit of huge agricultural plots. Moreover, more than half the planet's inhabitants now live in cities. This growing urbanization is causing new forest spaces to be invaded, particularly to build the necessary housing and infrastructure.

3 - HOW MANY PEOPLE RELY ON FORESTS FOR THEIR LIVELIHOOD AROUND THE WORLD?

- C** 1 in 5

Around 1.6 billion people – encompassing more than 2,000 indigenous cultures – depend on the forests for their survival. The forests are home to more than 80% of the animal, plant and insect species on the planet.

4 - WHAT PROPORTION OF GLOBAL FOOD IS MADE UP OF PLANTS?

- C** 80%

Over 80% of food for human consumption is provided by plants. Five cereal crops account for 60% of calorific intake.

5 - FORESTS PLAY AN ESSENTIAL ROLE IN COMBATTING CLIMATE CHANGE BECAUSE:

- B** The trees produce oxygen

The main systems that produce a surplus of oxygen are forests in formation and sea algae. The ocean phytoplankton alone provides more than half of all atmospheric oxygen.

6 - BIODIVERSITY IS:

- A** All living things on Earth

Biodiversity, a contraction of "biological diversity", refers to the variety of the living world. It is the diversity of all forms of animal, plant and microscopic life on Earth, and of all relationships these species weave between each other and with their environment.

7 - WHAT IS ARABLE LAND?

- A** It is land that can be worked or cultivated

Arable land comprises fallow land, land growing cereal and vegetable crops and seeded grassland. When intensively cropped and worked, arable land loses some of its qualities (humus, genetic diversity and fungi, generally becoming degraded; it also sometimes loses some of its water retention and purification capacity). Globally, losses of arable land are estimated at nearly 20% of the French territory.

8 - OF ALL KNOWN ANIMAL SPECIES...

- C** 8% are already extinct and 22% are facing extinction

The way in which we treat our planet has a considerable effect on global biodiversity. Of all the animal species known, 8% are already extinct and nearly 22% are at risk of becoming so in the near future. However, biodiversity includes more than just animals. The world is home to more than 80,000 species of tree and numerous microsystems. All these species have a role to play in maintaining the natural, fragile balance.

9 - HOW MANY CULTIVATED PLANTS HAVE DISAPPEARED IN THE LAST CENTURY?

- C** 75% of cultivated plants

Since the start of the century, 75% of the genetic diversity of cultivated plants has been lost. We are increasingly dependent on an ever decreasing number of crop varieties and, consequently, ever less abundant genetic reserves. This is resulting primarily in the substitution of traditional varieties with uniform commercial varieties. And yet biodiversity is essential for health, food security and ecosystem maintenance.

10 - THE AFRICAN ELEPHANT POPULATION WAS ESTIMATED AT 1.3 MILLION IN 1970. HOW MANY IS IT TODAY?

- B** 350,000

One elephant dies every 15 minutes around the world due to poaching. Hunted for their ivory, African elephants have suffered drastic reductions in their population.



16

PEACE, JUSTICE AND STRONG INSTITUTIONS



DID YOU KNOW?

1 - A BLUE HELMET IS:

- A** A UN peacekeeping soldier

Blue helmet is the name given to soldiers working in the context of a UN peacekeeping mission. The name comes from the fact that they wear a "UN blue" helmet. This enables them to be clearly distinguished from other combatants.

2 - A DEMOCRACY IS A COUNTRY GOVERNED BY:

- B** Representatives elected by the inhabitants

Democracy is a political system based on the principle that sovereignty lies with all citizens, either directly (through referenda) or indirectly, through the intermediary of their elected representatives. Elections must be held regularly and often, by universal suffrage.

3 - OF THE 197 COUNTRIES IN THE WORLD, HOW MANY WERE CONSIDERED TO BE AT PEACE IN 2016?

- A** 10

In 2016, only Botswana, Chile, Costa Rica, Japan, Mauritius, Panama, Qatar, Switzerland, Uruguay and Vietnam were free of all conflict. And the situation is tending to worsen in countries at war.

4 - WHAT WAS THE UN'S GLOBAL PEACEKEEPING BUDGET FOR 2017?

- A** 6.8 billion dollars

The approved budget for UN peacekeeping operations in the year 1 July 2017 to 30 June 2018 was approx. USD 6.8 billion. This amount finances 13 of the 15 peacekeeping operations. It represents less than 1% of the total world military expenditure, estimated at 1,747 billion dollars in 2013. In other words, 100 billion firearms are traded around the world each year.

5 - WHAT DO THE US, RUSSIA, CHINA, THE UNITED KINGDOM AND FRANCE HAVE IN COMMON?

- C** They are the countries that finance the most peace and the most war in the world

In 2016, these countries were the five biggest arms sellers in the world, while also being among the most significant contributors to the UN peacekeeping budget, along with Japan and Germany (3rd and 4th financial contributors to peace respectively).

6 - WHICH INSTITUTIONS ARE MOST AFFECTED BY CORRUPTION IN THE WORLD?

- B** Justice and the police

Corruption forms an obstacle to sustainable and inclusive development, resulting in unequal treatment of citizens and a lack of public trust in institutions and representatives.

7 - HOW MANY CHILDREN LIVE IN REGIONS THREATENED BY CONFLICT?

- C** 1 in 9, or 230 million children

The number of children in the world is estimated at 2.2 billion, of whom 1.9 billion live in the developing countries and 600 million suffer from poverty. 15 million are directly affected by war and 13 million are no longer able to go to school due to conflict in the Middle East alone.

8 - WHAT DOES FAIR TRADE OFFER PRODUCERS?

- B** Fair prices and a decent salary

Fair trade is a commercial partnership based on dialogue, transparency and respect. The aim is to achieve greater fairness in global trade. It contributes to sustainable development by offering better trading conditions and guaranteeing the rights of marginalized producers and workers. Fair trade organizations undertake to support producers, raise awareness and campaign for changes in the rules and practices of conventional international trade.

9 - WHAT IS A TAX HAVEN?

- A** A place where you pay little or no taxes

There are more than 50 tax havens in the world. For example, in 2013, the cost of tax evasion in the European Union was estimated at more than EUR 1,000 billion per year. This is 20% of Gross Domestic Product (GDP) or EUR 2,000 per European citizen.

10 - HOW MANY CHILDREN AGED 6 TO 17 LIVE IN A COUNTRY WHERE CORPORAL PUNISHMENT IS NOT COMPLETELY BANNED IN SCHOOL?

- C** 1 in 2

732 million children or 1 in 2 children aged 6 to 17 live in a country that does not completely ban corporal punishment in school.


DID YOU KNOW?
1 - WHAT IS THE UN?

- B** The United Nations

The intergovernmental organization known as the United Nations was founded in 1945 following the Second World War to replace the League of Nations. Its aim was to prevent wars between countries and ensure dialogue. Almost all countries on the planet are members (193 out of 197).

2 - WHO CAN WORK TO ACHIEVE THE 17 SDGs?

- E** All the above

The State, local authorities, companies, unions, researchers, associations, citizens, users... achieving the SDGs will require everyone to mobilize, on every level, from individual to State.

3 - OF THE FOLLOWING PROPOSALS, WHICH COULD HELP FINANCE SUSTAINABLE DEVELOPMENT AND POVERTY REDUCTION?

- D** All the above

Decisive issues such as poor countries' debt, corruption, tax havens, natural resource predation and land grabbing, the ways companies from the rich countries act overseas, will absolutely need to be regulated if we want the sums allocated to sustainable development to truly serve as levers in the long term.

4 - THE GLOBAL POPULATION IS CURRENTLY 7.5 BILLION PEOPLE. HOW MANY WILL IT BE IN 2050?

- C** 9 billion

The UN anticipates significant growth in Africa while Europe and Asia will decline. Between 2017 and 2050, more than half the increase in the world's population will be concentrated in around 10 countries: India, Nigeria, the Democratic Republic of Congo, Pakistan, Ethiopia, Tanzania, the United States, Uganda, Indonesia and Egypt.

5 - WHAT IS DEVELOPMENT ASSISTANCE?

- A** Financial assistance from the richest to the poorest countries

Development assistance can come from private bodies – NGOs for example – or directly from the State, in which case it is public development assistance. The sums transferred by the richest countries are aimed at encouraging economic development and improving the living conditions in the countries in question.

6 - THE EARTH SUMMIT, HELD IN RIO IN 1992, SET THREE SUSTAINABLE DEVELOPMENT PILLARS, NAMELY:

- C** Economic progress, social well-being and environmental protection

Sustainable development means viable, liveable and equitable development, or "a development that meets the needs of the present without compromising those of future generations".

7 - WHAT AMOUNT IS DIVERTED EACH YEAR FROM THE DEVELOPING COUNTRIES TO THE COUNTRIES OF THE NORTH?

- C** EUR 800 billion

The amount of illicit capital that disappears from developing countries to be sheltered in the North is to the order of EUR 800 billion per year. Tax evasion by multinational companies through their subsidiaries is likely to represent some EUR 125 billion of transfers each year from the developing countries of the South to tax havens.

8 - SINCE 2009, THE NUMBER OF WEB USERS IN THE DEVELOPING COUNTRIES HAS:

- C** More than doubled

The number of web users in developing countries doubled between 2009 and 2014. Around 281 million Africans had an Internet subscription on their mobile phone in 2017, or 23% of the continent's population. This is increasing by 41% a year. The smartphone is becoming the number one way of navigating the Internet and disseminating information.

9 - IN THE WORLD, NEARLY:

- C** 4 billion people use the Internet and two-thirds of them live in the developing countries

The Internet has 3.81 billion users worldwide. This represents a little more than one in every two people. According to the most recent data, Internet use is continuing to grow at a constant rate, and more rapidly in developing countries than in the developed world. Developing countries today account for more than two-thirds of connections worldwide.

10 - TRUE OR FALSE? INFORMATION AND COMMUNICATION TECHNOLOGIES (ICT) ARE BENEFICIAL TO DEVELOPMENT.

- A** True

Three features of ICT are particularly important for social and economic development, namely their capacity to increase: the effectiveness of economic and social processes, the effectiveness of cooperation between different stakeholders and the volume and range of information that is accessible to individuals.



SDGs AND I

Transforming our World:
**The 2030 Agenda for Sustainable
Development**